

BLACK COUNTRY CUSTOMS™
HANDCRAFTED IN THE UK

SUPERGRACE USER MANUAL



IN COLLABORATION
WITH

Billy Corgan & 
BILLY CORGAN BRIAN CARSTENS

Laney™

CONTENTS

INTRODUCTION	2
FEATURES	3
INCLUDED IN THE BOX	3
CONTROLS	4
TOP VIEW	4
REAR VIEW	7
RIGHT SIDE VIEW	9
LEFT SIDE VIEW	9
BOTTOM VIEW	11
HOW TO CONNECT THE SUPERGRACE	12
AS A TRADITIONAL GUITAR AMPLIFIER INTO A CABINET	12
AS AN AMPLIFIER WITH FX LOOP	12
AS A PEDAL INTO ANOTHER AMPLIFIER	13
A SILENT PRACTICE RIG USING HEADPHONES OUTPUT	13
DIRECTLY INTO A PA OR RECORDING DEVICE WITH XLR DI OUTPUT	14
DIRECTLY INTO YOUR COMPUTER VIA USB	15
MIDI	16
THE LA·IR APP	17
DOWNLOAD & INSTALLATION	17
FIRMWARE UPDATE	18
USING THE APP	19
SETTINGS PANEL	22
EXAMPLE SETTINGS	23
SPECIFICATIONS	25
BLOCK DIAGRAM	26
DIMENSIONS (in mm)	27
SAFETY AND WARNINGS	28



INTRODUCTION

The Laney **SUPERGRACE** LOUDPEDAL brings together two distinct and stunning amplifier voices in a dual-channel 60-Watt amplifier LOUDPEDAL format, combining modern innovation with classic British heritage. Designed by Laney in collaboration with Billy Corgan and amplifier designer Brian Carstens, it unites the groundbreaking Carstens **GRACE amp** with the iconic Laney **SUPERGROUP amp**, offering players an unmatched range of tonal possibilities. Two incredible amplifiers in one unit.

Together in the SUPERGRACE, these two amps offer a unique tonal duality: the modern, high-gain articulation of the GRACE alongside the vintage power and raw character of the SUPERGROUP. The SUPERGRACE is a versatile, professional-grade platform designed to inspire players seeking both innovation and heritage in one pedal.

"Billy told me that he wanted to give the average guitar playing customer the chance to own his live rig, tone - worth \$100,000s - so that's what we did!"

- James Laney

"It's really solid, there's so much body to the notes"

- Billy Corgan



FEATURES

- 60W RMS High Power output
- Two independent amplifier voices that combine the authentic sounds of a Carsten 'grace' and an LA100BL 'SUPERGROUP'
- 'grace' channel with volume, gain, & bright switch. SUPERGROUP channel with Volume, Gain & DIMED/CLEAN modes
- Built in Footswitchable Pre-Boost with level
- 3 Band Passive Tone Stack as well as overall Tone Control
- Footswitchable Digital Reverb with control
- Preloaded with two High Quality LA-IR Digital IR's including Billy Corgan's 'Live' cab capture
- Emulated balanced XLR Out with IR select and ground lift switches
- Class Compliant Audio streaming via USB Type-C socket @48kHz (Emulated and unemulated main out twin stream)
- LA-IR App allows loading your own custom IR's and access to firmware updates
- MIDI In and Thru, with full size MIDI connectors
- 6.3mm Transformer Isolated FX Loop (FX Send doubles as a non-emulated line out)
- 3.5mm Stereo Aux In and 3.5mm Stereo Headphone Output (with Cabinet Emulation)

INCLUDED IN THE BOX

- SUPERGRACE
- Universal 100-240V~ power supply and mains cord.
- USB Type-C to C Cable (2m).
- USB A to C Adaptor.



CONTROLS

TOP VIEW



The Laney **SUPERGRACE** LOUDPEDAL combines two distinct and stunning amplifier voices in a dual-channel 60-Watt amplifier LOUDPEDAL format. Delivering modern innovation with classic British heritage tones accessible via footswitch or MIDI. Each Amp has its own independent Gain and Volume and a shared Tone stack. You can tailor the response of each amp individually via the bright options on the GRACE amp and the CLEAN/DIMED options on the SUPERGROUP amp. The SUPERGRACE features a switchable BOOST and REVERB which can be switched via footswitch or recalled via MIDI.

GRACE SIDE SETTINGS

The **GRACE SIDE** was born from Billy Corgan's demand for something unprecedented: extreme gain, massive headroom, and a unique tonal identity. Adapted from the original Carstens Grace amplifier, this channel delivers articulate high gain with exceptional note definition, even at saturation levels where most amps collapse. Its design emphasises harmonic richness and dynamic sensitivity, allowing players to move effortlessly between clean, crunch, and overdrive using only guitar volume, gain controls, or touch. The result is a wide-open, three-dimensional voice.

- **VOLUME** control to set the overall level of the amp.
- **GAIN** control independently increases the preamp gain. Adds more distortion to your signal.

BRIGHT SWITCH allows for control over the frequency response.

- **(II)** - extends the high frequencies and slightly dulls the low-end.
- **(I)** - boosts the low-end frequencies adding some warmth to the tone whilst reducing the power of the high frequencies.
- **(0)** - no change



SUPERGROUP CHANNEL SETTINGS

The **SUPERGROUP channel** of the SUPERGRACE is a faithful recreation of the legendary Laney Supergroup amplifier, a circuit synonymous with raw British power. Originally designed in the late 1960s and famously used to shape the sound of early heavy metal, the Supergroup delivers a uniquely aggressive but harmonically rich voice that remains highly sought after today.

This channel captures the **harmonic uniqueness and raw power** of the original, where gain is generated naturally by pushing the input stage and power section. The result is an uncompressed, wide-bandwidth response that emphasises clarity, punch, and a visceral connection between player and amp.

Tonally, the SUPERGROUP channel excels at **open, unfiltered crunch** with exceptional midrange presence and tight, beastly low end. Its dynamic range makes it highly interactive with guitar volume and picking dynamics, rewarding players who want authentic, vintage-inspired drive with no compromise on feel. Whether pushed into classic rock overdrive or used as a bold clean platform, the SUPERGROUP channel retains the unmistakable authority of its heritage design.

The LA100L's were renowned for their clean sounds as well as their full on 'dimed' sounds. The 'clean' mode on the SUPERGROUP channel replicates the clean, open sound on an LA100BL and provides a wonderful platform for pedals. The SUPERGROUP channel in 'dimed' mode gives you all the tubby overblown gain associated with the original LA100BL including the famous 'transformer rub' sub note which can be heard on many early recordings of the LA100BL.

- **VOLUME** control to set the overall level of the amp.
- **GAIN** control independently increases the preamp gain of channel 2. Adds more distortion to your signal.

DRIVE SWITCH

- **DIMED** mode gives you all the tubby overblown gain associated with the original LA100BL including the famous 'transformer rub' sub note which can be heard on many early recordings of the LA100BL.
- **CLEAN** mode on the SUPERGROUP channel replicates the clean, open sound on an LA100BL and provides a wonderful platform for pedals.



BOOST CONTROL

The switchable and variable BOOST control is an additional gain/drive setting to increase the input signal, just like placing a boost pedal in the signal path. This works on both channels simultaneously, with an LED above the control knob to show it is active.

NOTE: The status of the BOOST function is recalled automatically to the status of the BOOST when that channel was last selected. This is the default mode. If you want the status of the BOOST function to remain unchanged when you change channels you can configure this within [THE LA-IR APP](#)

TONE

The TONE control works in a similar fashion to the Tone control you probably have on your guitar except that it uniquely works at the other end of the amplification chain. It has the ability to not only control the overall top end response but also reduce upper end harmonics on the output stage and preamplifier overdrive sounds. This will give you bright cutting sounds at high settings and smooth rounded sounds at lower settings. (Midway (0) is a good starting point).

REVERB

Our built-in studio quality spring line reverb effect based on our award-winning Secret Path pedal. Reverb is evocative of space – a note contains pitch, but reverb contains place and fills out the sound. Turn the knob clockwise to increase the strength of the effect. The Reverb can be activated/deactivated via footswitch, with the adjacent LED indicating when the Reverb is active.

EQ CONTROLS

The built in three band passive EQ stack allows you to fine tune your sound. Passive controls that always sound musical at any setting. As a starting point, 12'o clock is the neutral setting for these and will provide you with a good tone for further tweaking.

- **BASS** – Adjusts the strength of the low-end response of your output, for a deeper sound when turned clockwise.
- **MIDDLE** – Adjusts the strength of the mid-range response of your output, providing a fuller tone when turned clockwise.
- **TREBLE** – Adjusts the strength of the top-end response of your output. Turning clockwise will boost the brighter, higher notes.

FOOTSWITCHES

- **REVERB** – toggle on/off the reverb control. Reverb status is indicated by the LED to the upper right of the reverb control knob.
- **AMP** - choose between the grace / SUPERGROUP channels using this switch. The active channel is indicated by the LED to the right of Gain1/2 controls.
- **BOOST** – toggle the boost on/off. Boost status is indicated by the LED to the upper right of the boost control knob.



REAR VIEW



POWER

The Power inlet and switch. This switch will turn on and off the pedal. We suggest turning the pedal off when plugging in the power supply. The SUPERGRACE has an included power supply runs universally at 100-240V~ 50/60Hz.

Warning: Only connect the provided 24V 2.5A power supply to the DC inlet.

USB

Use the included Type-C USB cable to connect to a computer and access the LA·IR app to modify the pedal's Settings, EQ and IRs. This is also a class compliant audio send, with a stereo feed featuring both emulated and unemulated audio.

HEADPHONE OUT

3.5mm jack to connect your headphones for silent practice as the level feed to the LOUDSPEAKER output is muted. Your selected tone will play directly into your headphones including any selected IR emulation. Adjust the level using the channel volumes controls. The cabinet emulation follows whatever the switch is set to.

AUX IN

3.5mm jack to plug in any audio playing device to add a backing mix to your guitar track. This is added after the FX loop.



LA·IR EMULATED DI OUT

A balanced XLR output to go to your external devices such as a PA or audio interface. Set your desired tone on the pedal first then set the parameters on your chosen interface to get the sound you want. Decide on the emulation you want applied with the LA·IR switch, choosing between two IRs loaded onto the SUPERGRACE pedal. The pedal ships with two amazing IR's Cabinet A is a detailed IR of Billys favourite LA412 cabinet. This is the cabinet that lives in an ISO box when on tour and has been Billys "go to" cabinet for recent tours. Cabinet B is an IR capture of an LA412 G12H loaded cabinet running at high gain.

The unit ships with these 2 IR's loaded as standard but using the LA·IR app you can store many more and drag and drop your own favourite IRs on the SUPERGRACE.

- **OFF** - No emulation applied to DI out or headphones.
- **A** - By default, applies Billy Corgan's LA412 G12H IR to the DI out. This can be swapped using the LA·IR desktop app. See [USING THE APP](#) for more information.
- **B** - By default, applies Billy Corgan's LA412 G12H High Gain IR to the DI out. This can be swapped using the LA·IR desktop app. See [USING THE APP](#) for more information.
- **GROUND LINK** - Disconnects the ground from pin 1 of the DI output ONLY. Useful to attempt to reduce ground loop hum when connected.

MIDI IN/THRU

Connect to a MIDI foot controller to allow for remote switching of REVERB, CHANNEL Select and BOOST using the MIDI IN socket on the SUPERGRACE or switch external devices with the REVERB, CHANNEL and BOOST footswitches using the MIDI THRU/OUT socket. See [MIDI](#) for more information.



RIGHT SIDE VIEW



INPUT

6.3mm input jack. Plug your signal input in here, either direct from your guitar or from your pedalboard setup.

LEFT SIDE VIEW



FX SEND / LINE OUT (TRANSFORMER ISOLATED)

6.3mm output jack. This is a multi-purpose output that can be used either as a line level output, or as a traditional effect send to your other gear. As this is transformer isolated, it is also possible to use this output directly into the front end of another amplifier, effectively making the SUPERGRACE a high-quality distortion/boost pedal with no requirement to use the loudspeaker output.



FX RETURN

6.3mm jack to connect the output of your FX loop gear back to the SUPERGRACE. This is an insert type loop; all the signal is sent through your external gear. Inserting a jack here will break the signal path.

LOUDSPEAKER

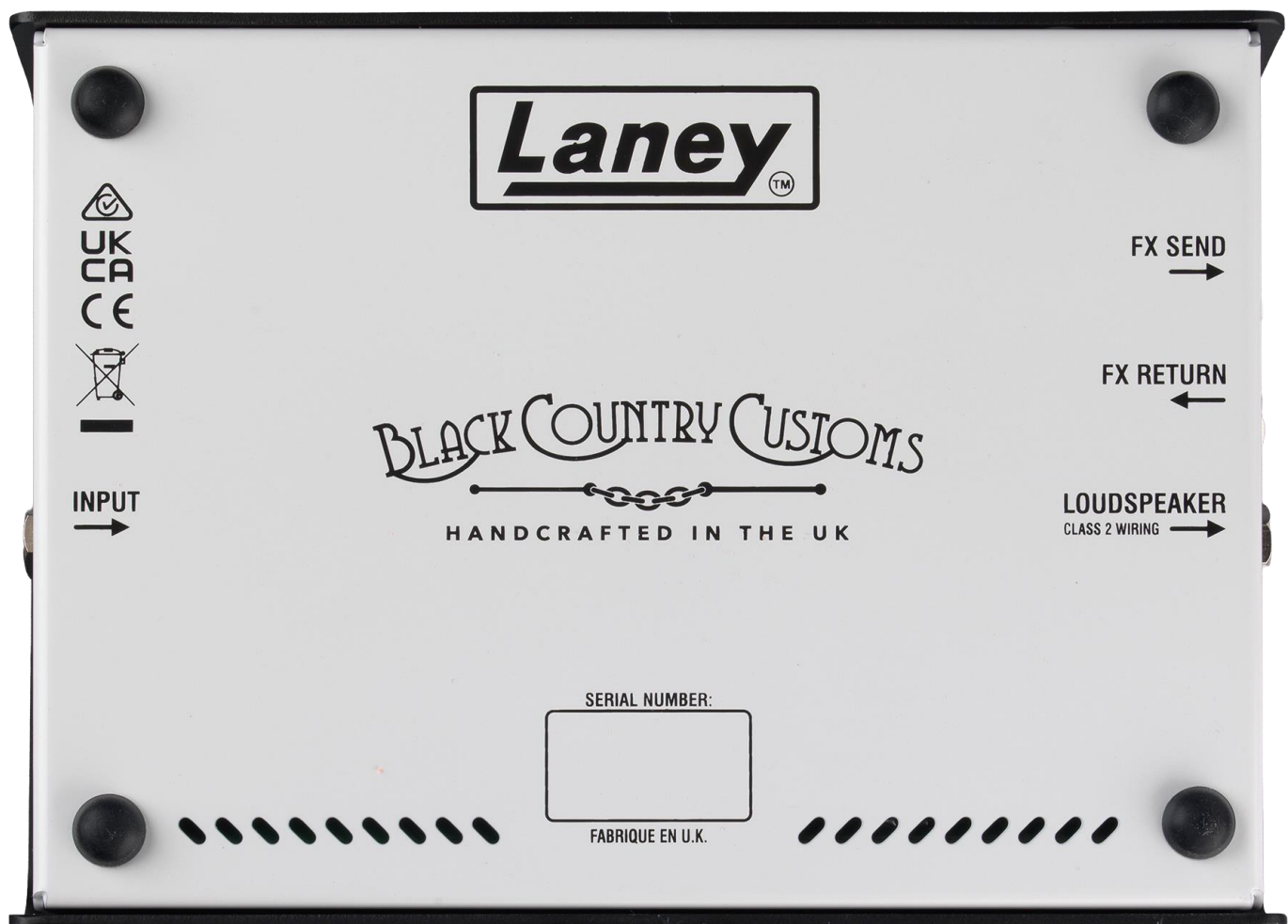
6.3mm jack to output your signal to your passive speaker cabinet. Use this output when using the SUPERGRACE as an amplifier directly into an 8-16 Ω speaker cabinet. Do not connect this output to any other gear such as an effect unit or another amplifier input.

Always use good quality speaker cable, not microphone or instrument cable.

WARNING: Minimum total impedance for the connected speaker cabinet is 8 Ω .



BOTTOM VIEW

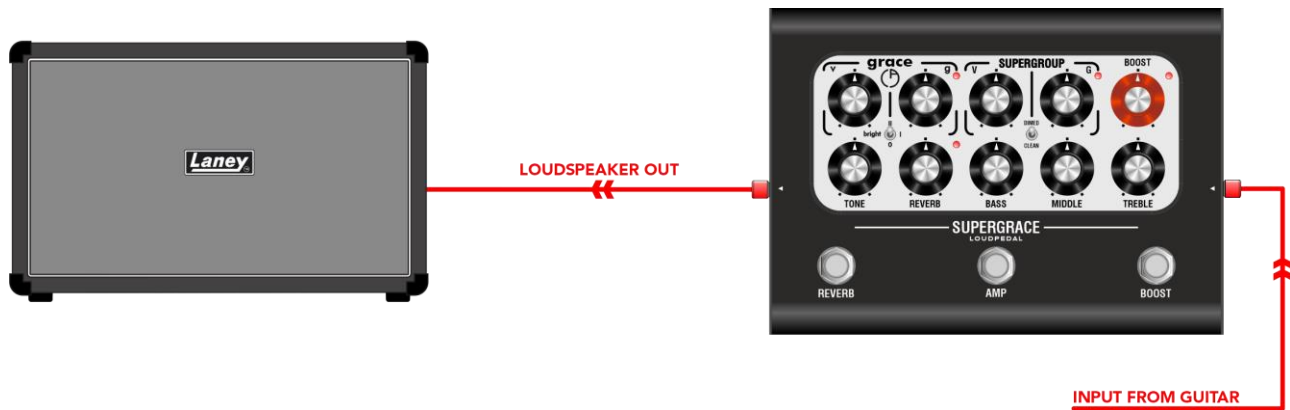


The product serial number is attached here along with other information.



HOW TO CONNECT THE SUPERGRACE

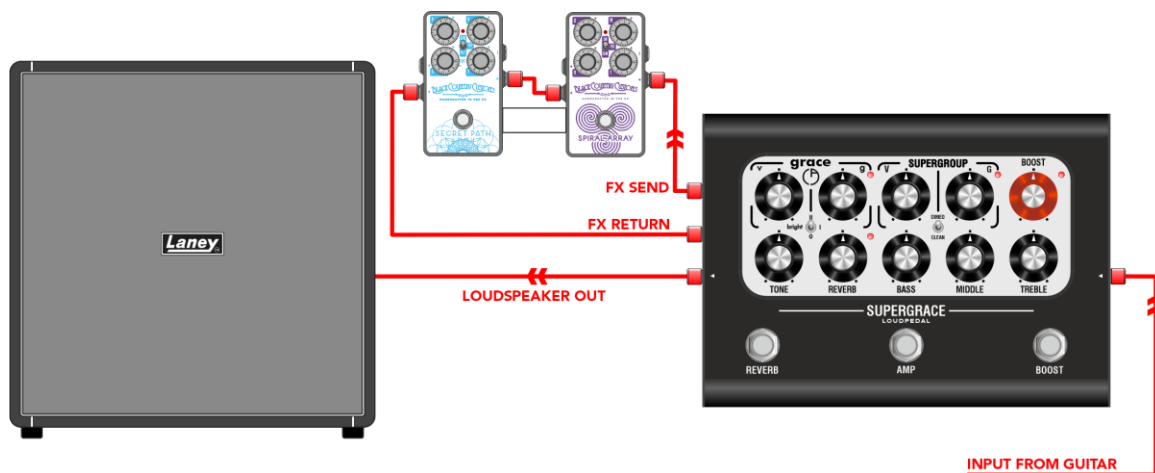
AS A TRADITIONAL GUITAR AMPLIFIER INTO A CABINET



The SUPERGRACE can function just like your regular head, plugged directly into a passive speaker cabinet. It's loud.

The DI can be used as a balanced line level feed for additional active cabinets such as our LFR range.

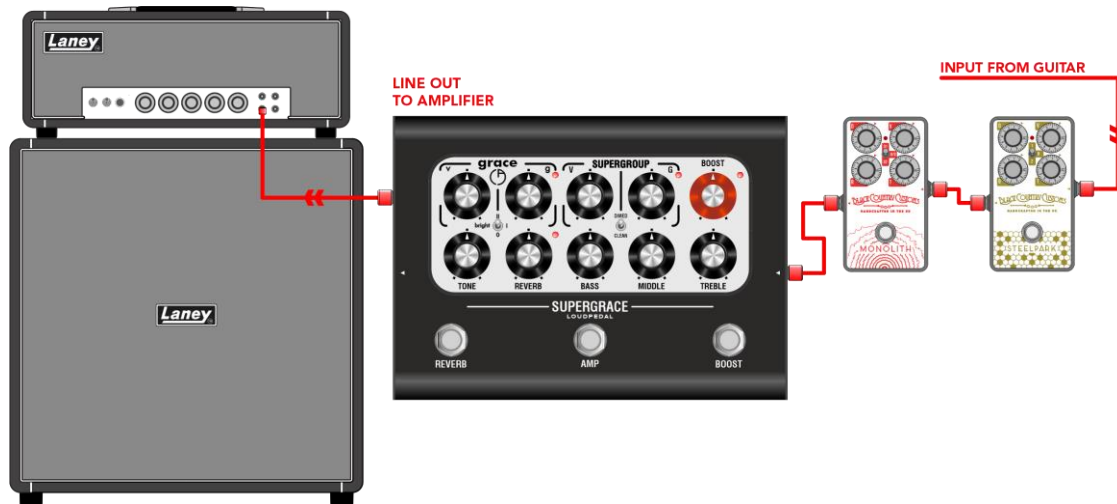
AS AN AMPLIFIER WITH FX LOOP



You can also connect your pedalboard to the SUPERGRACE's FX loop and use the pedal in place of a regular amplifier. Output this to a passive speaker cabinet and you have your very own lightweight, portable amplifier.



AS A PEDAL INTO ANOTHER AMPLIFIER



The SUPERGRACE can be connected in series with your regular pedal setup to act as a dual channel gain pedal with additional boost. Connect the FX send socket to your amp head.

A SILENT PRACTICE RIG USING HEADPHONES OUTPUT



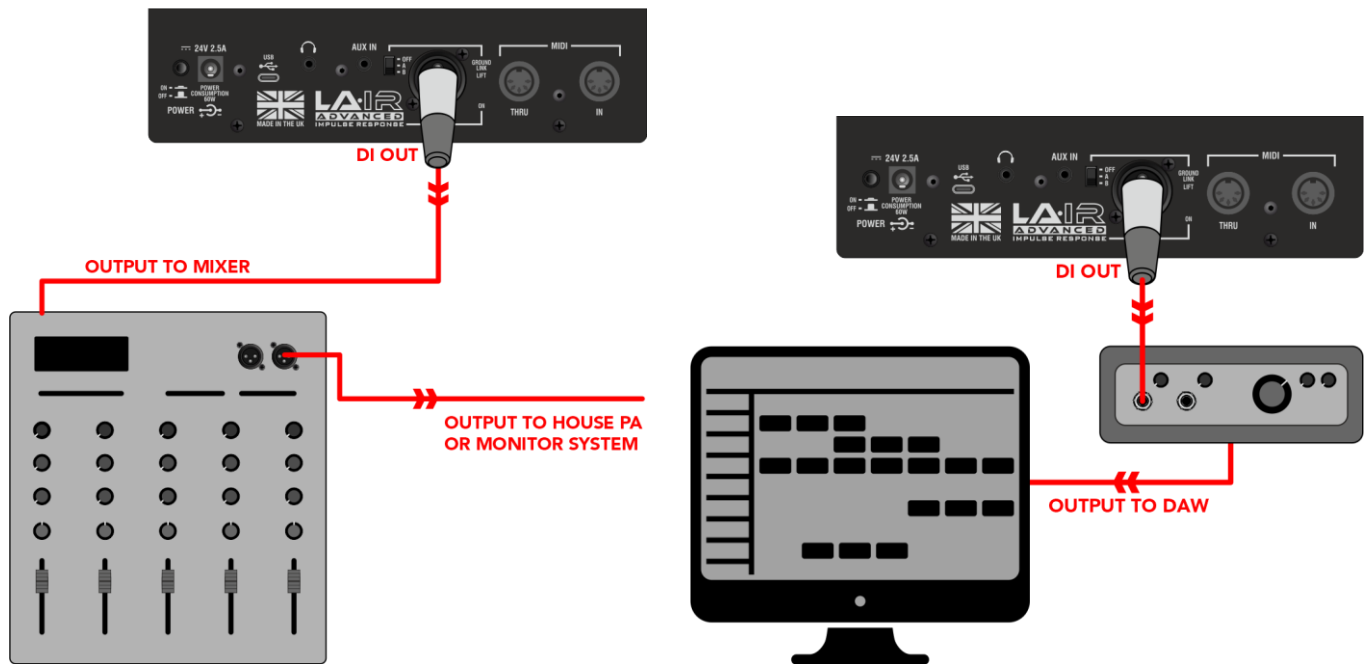
The SUPERGRACE includes a high-quality headphone output for silent practice. It is optimised for high impedance headphones such as common 33Ω, though any may be used.

To play along with a backing track, the SUPERGRACE comes with an AUX in connection. This is a stereo 3.5mm mini jack to connect to any media playing device.



DIRECTLY INTO A PA OR RECORDING DEVICE WITH XLR DI OUTPUT

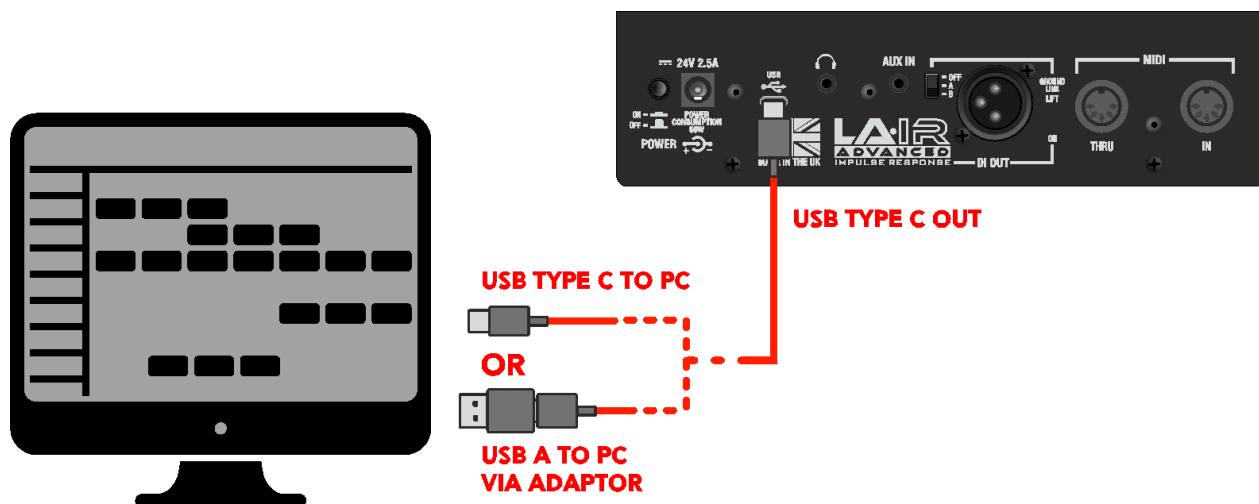
EN



The SUPERGRACE has a high-quality speaker emulated, balanced DI output that can be connected to any balanced/unbalanced line level input device such as a PA or audio interface to DAW.



DIRECTLY INTO YOUR COMPUTER VIA USB



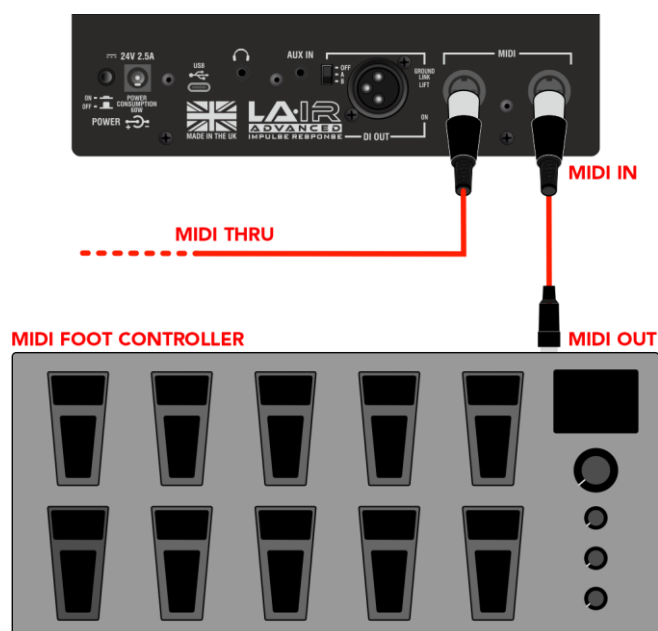
Once the pedal has been powered on and is connected, your PC will then pop-up that the pedal is connected and will notify you when the device is ready.

You can now freely use the pedal with the LA-IR app once it has been installed. Simply launch the app with the pedal connected and it's ready to go. See [THE LA-IR APP](#) section for more information.

In addition, there is dual channel USB audio. The left channel will provide you with the emulated audio, following whatever the LA-IR emulation switch is set to. The right channel will provide you with the unemulated audio, bypassing the inbuilt cabinet emulation.



MIDI



Connect to a MIDI foot controller to allow for remote switching of REVERB, CHANNEL Select and BOOST using the MIDI IN socket on the SUPERGRACE or switch external devices with the REVERB, CHANNEL and BOOST footswitches using the MIDI THRU/OUT socket. The SUPERGRACE receives MIDI messages on CH8 so please ensure your external MIDI foot controller is configured to send MIDI messages on CH8.

MIDI MESSAGE TABLE

CC	FUNCTION	VALUE
1	Channel switch	0 = ch0 1 = ch1
2	Boost toggle	0 = Boost Off 1 = Boost On
3	Reverb toggle	0 = Reverb Off 1 = Reverb On



THE LA·IR APP

Through the purchase of your SUPERGRACE, you also have access to Laney's very own LA·IR app. The app allows you to expand the sound of your SUPERGRACE even further by switching out the loaded IRs with your own as well as offering an 8-band parametric EQ for each cab.

All this can be done on the fly during practice, so you can hear the change in your sound as you make changes.

The app runs on Windows® 10/11 and macOS®

Windows is a trademark of the Microsoft group of companies. macOS is a trademark of Apple Inc.

DOWNLOAD & INSTALLATION

To receive your software, first register your product via the [Laney warranty page](#). On submission of your registration, you will be provided with a download link for the installer – MAC or WINDOWS.

A link to download the software will also be forwarded to your email.

WINDOWS

Once downloaded, run the Setup-LAIR_x64.exe found in the downloads folder in file explorer. Follow the installer instructions, accepting the EULA and choosing a suitable location for the install, then press Install to complete.

MAC

Once the .dmg file has been downloaded, drag this into the applications folder to complete the install. Launch the LA·IR app from this folder location from now on.

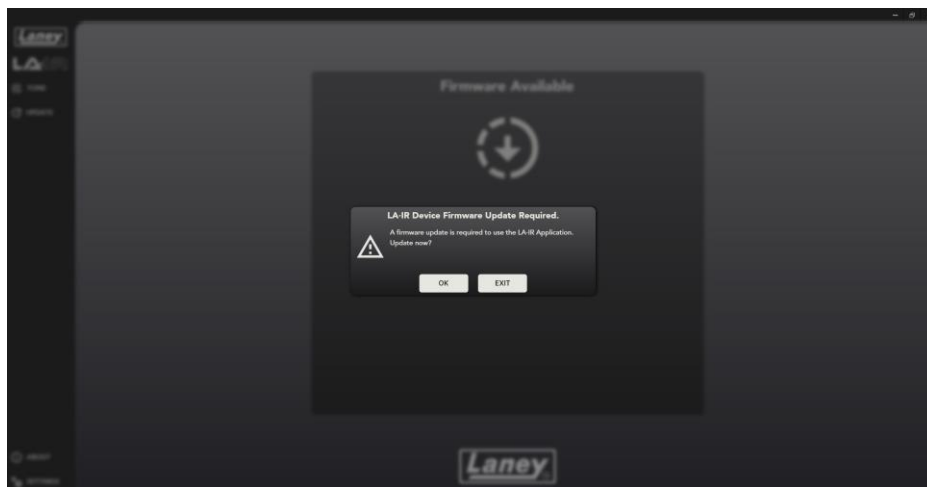
LA·IR UPDATE

The app will automatically prompt you for an update upon startup should a new version be released. We recommend accepting any updates as they may include new features or bug fixes.



FIRMWARE UPDATE

Similarly, with your SUPERGRACE connected and powered on, you will be notified if any firmware updates are available for the pedal. Again, we recommend allowing any updates that come through so as to improve your user experience.



Minor updates may not show as a pop-up so be sure to check the update panel from time to time, where these can be accessed.



USING THE APP

CONNECTING THE SUPERGRACE

Connecting the SUPERGRACE is easily done via the USB Type-C cable provided with the pedal in the box. Plug one end into the USB Type-C socket on the pedal and the other into your computer that has the app downloaded.

Can be plugged into a computer with either USB Type-C or A sockets – simply use the USB A to C adaptor provided.

CHANGING THE IRs

Aside from the two preloaded IRs on the pedal, the app can be used to swap these out for any of your own IRs. To load your own User IR, click the drop-down box under either cab A/B and select "Import IR" – only .wav files can be used. The app will convert your IR into the .Lair file format that the pedal can use. Do not worry, your original .wav file will not be deleted! Two of Laney's own cab IRs are also included with the app.



It is possible to edit the name of User IRs as well as delete them from the pedal and the app. To do so, right click on any IRs under the "User" section and press "EDIT" or "DELETE". The default System IRs cannot be deleted.

WARNING: Deleting a User IR is permanent and cannot be reversed. The only way to get the IR back is to re-import the original .wav file.

CHANGING THE GAIN

The gain of each cab IR can also be changed individually via the radial control on the right-hand side, should they be too loud/quiet. This gain will be saved to the IR's .Lair file so will remain when using the pedal without the app.

Simply drag the slider or alternatively use your mouse scroll wheel or double click and manually type the gain you want (in dB). Ranges from -40dB to +6dB.



BOOST INDEPENDENCE MODE

EN



By default, your pedal will have boost independence mode enabled (ON in the app), and the boost on/off setting will apply to the Grace/SUPERGROUP channels independently.

If you want the status of the BOOST footswitch to remain unchanged when you switch channels simply turn the "BOOST MODE" toggle switch in the LA-IR app to off.



CHANGING THE EQ

The LA·IR app also comes with an 8-band parametric EQ for each cab. 5 different filters are available, paired with easy-to-use controls allowing you to change the gain, frequency and Q factor depending on the filter applied.

WARNING: Any EQ changes will be permanently lost if the app is closed/disconnected without saving!



1. EQ TOGGLE

Turn on and off the EQ for the whole pedal (Cab A and B), can be useful for dry/wet testing.

2. A+B LINK

Link the Cab A and Cab B EQs to be the same. This will follow the EQ for Cab A when pressed. Unlinking will revert Cab B to its previous state.

3. DI CAB SELECT

Choose which cab you want to edit the EQ for. Selected cab is highlighted in black.

4. BAND CONTROLS

The main controls for each band are found here. Turn the band on and off and change filter you want the band to apply from the drop-down menu. Choose from peaking, high/low pass, and high/low shelf.

Additionally, 3 radial sliders are available to change the gain, centre frequency and Q factor of the filter. The value of each slider can be changed by dragging, using your mouse scroll wheel, or double clicking the number and manually typing in your desired value. Depending on the filter selected, 1 or multiple of these controls will be available.

5. FREQUENCY RESPONSE GRAPH

This graph displays the resultant frequency response of all the EQ bands. View your changes live to easily see how your sound will be affected. Additionally, each band is colour coded so you can see which filter is doing what.



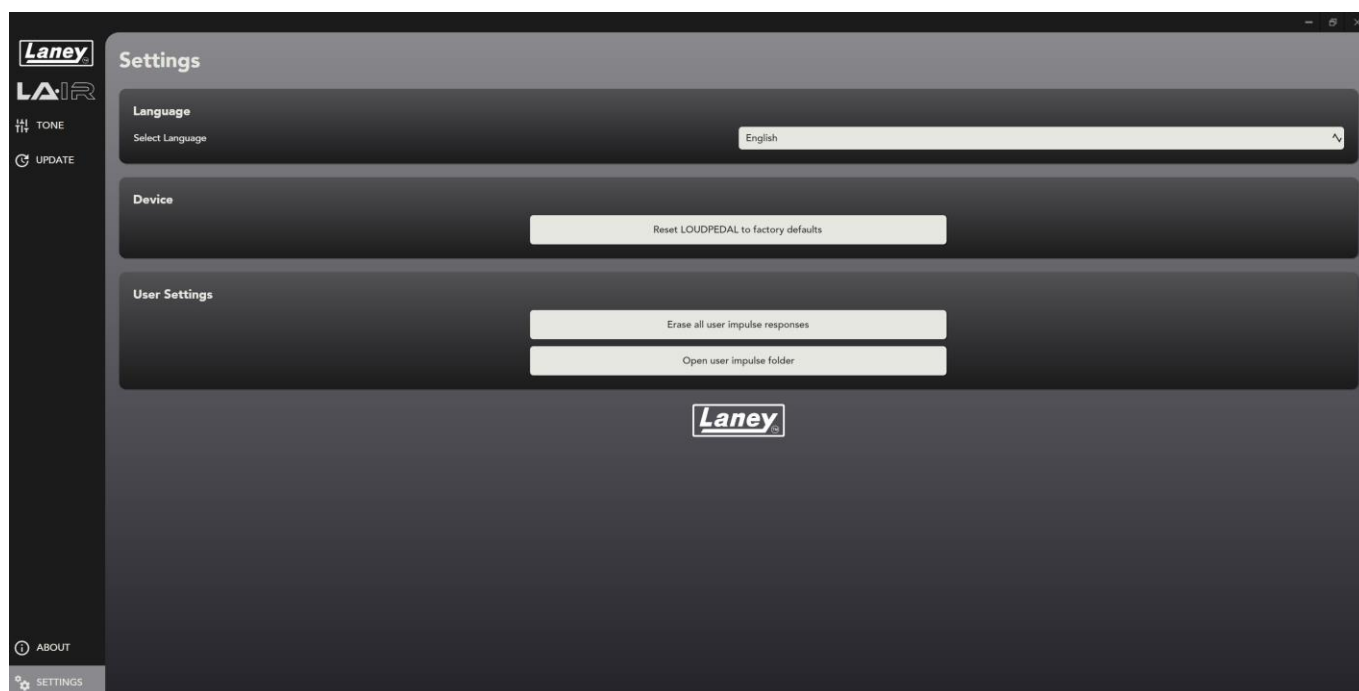
6. BAND NODE

The graph also shows a numbered node representing each band currently active. Showing the current centre frequency and gain, these are draggable to allow for quick and easy changes. For more precise changes we recommend using the band controls (4).

7. SAVE BUTTON

Press this to save any unsaved changes to the EQs (both A and B), so they can be stored on the pedal and used without the app. Should any unsaved changes be present, this will be visible to alert you that closing the app (or disconnecting the pedal) will lose these changes.

SETTINGS PANEL



LANGUAGE

Change the language of the LA·IR app to your preferred language.

RESET DEVICE

This will reset all EQ and gain changes as well as return the IRs back to the default Tom Quayle ones. This cannot be undone and all changes from the default will be lost.

ERASING THE USER IRS

Delete all user IRs from the app and pedal. These are impossible to get back unless you have the original .wav file to import again so be sure you want to do this. A pop-up warning will show before deleting.

OPEN USER IR FOLDER

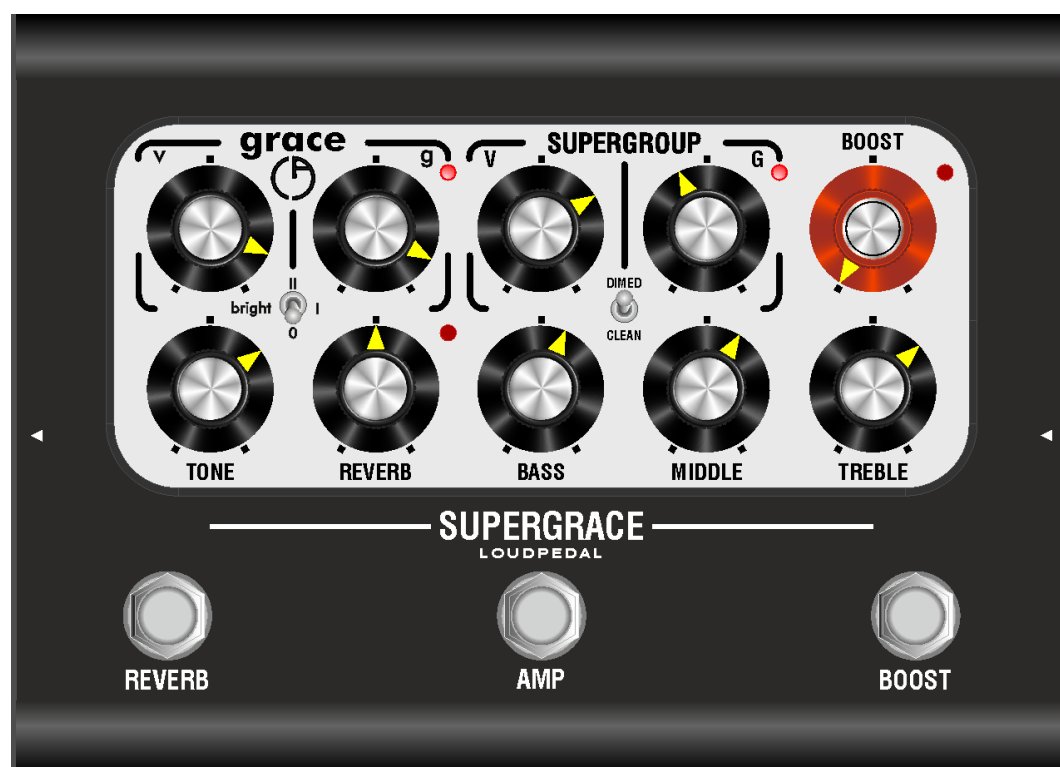
Open the folder where all your imported IRs are stored.



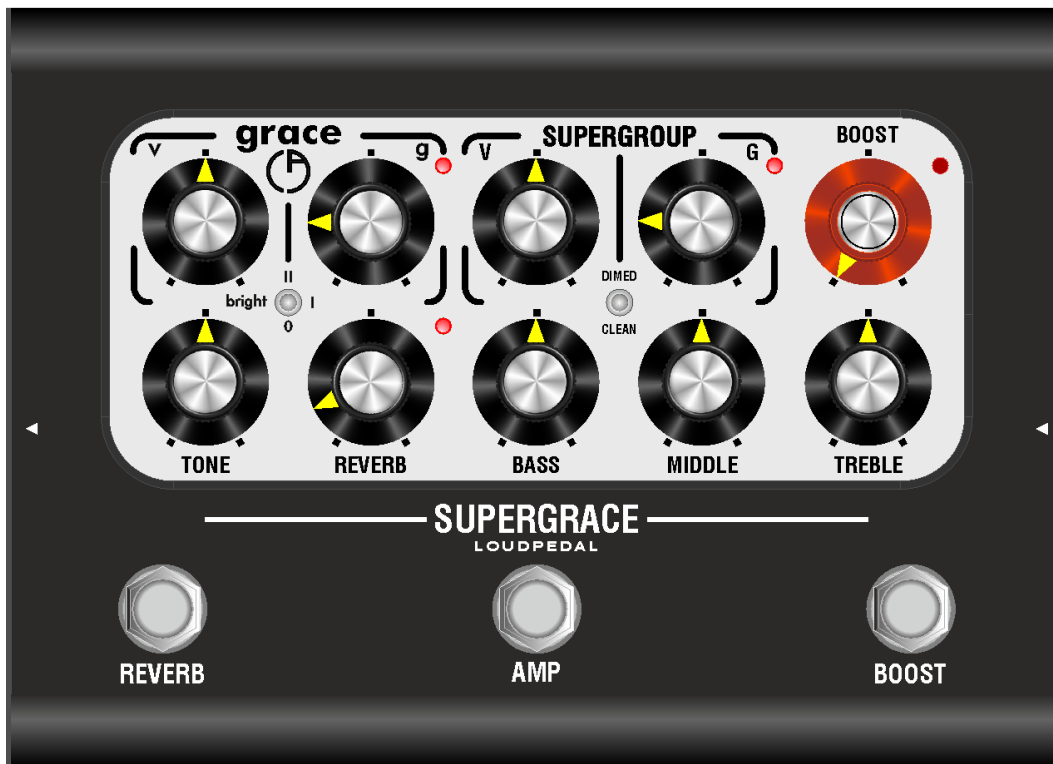
EXAMPLE SETTINGS

The best way to get started with your SUPERGRACE is to experiment with the controls to find your favourite sounds. However, for a head start, here are a few example tone settings to try out:

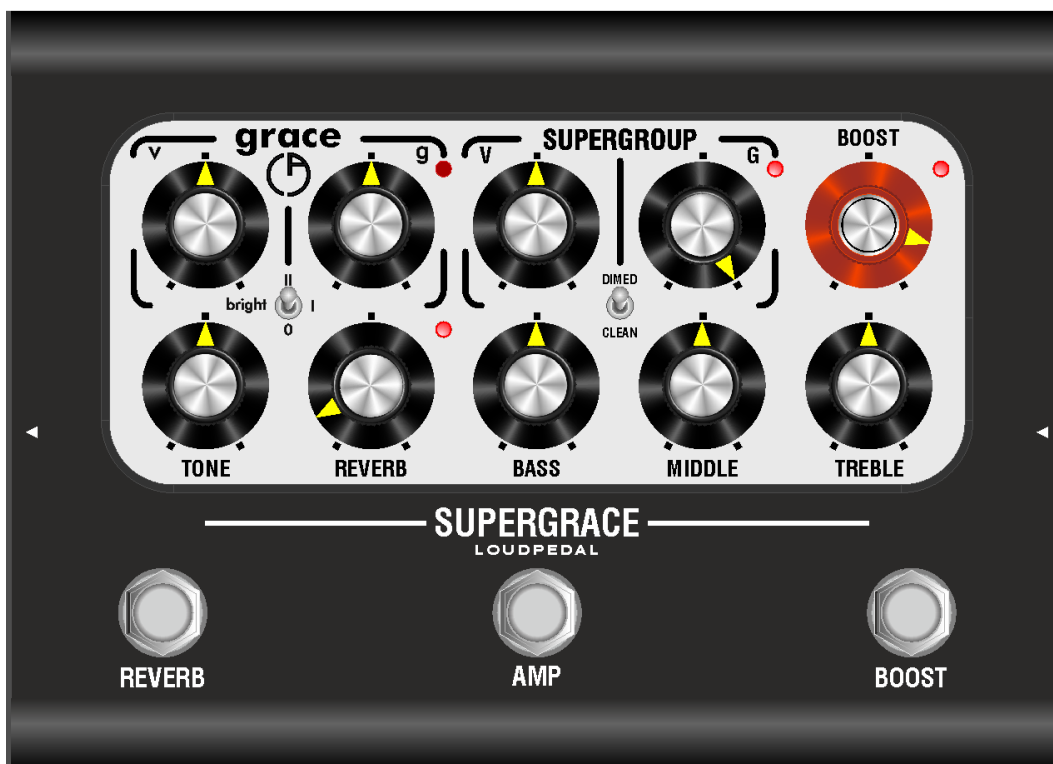
BILLY'S LIVE SETTING



CLEAN



CLASSIC LA100BL SUB TRANSFORMER HARMONIC

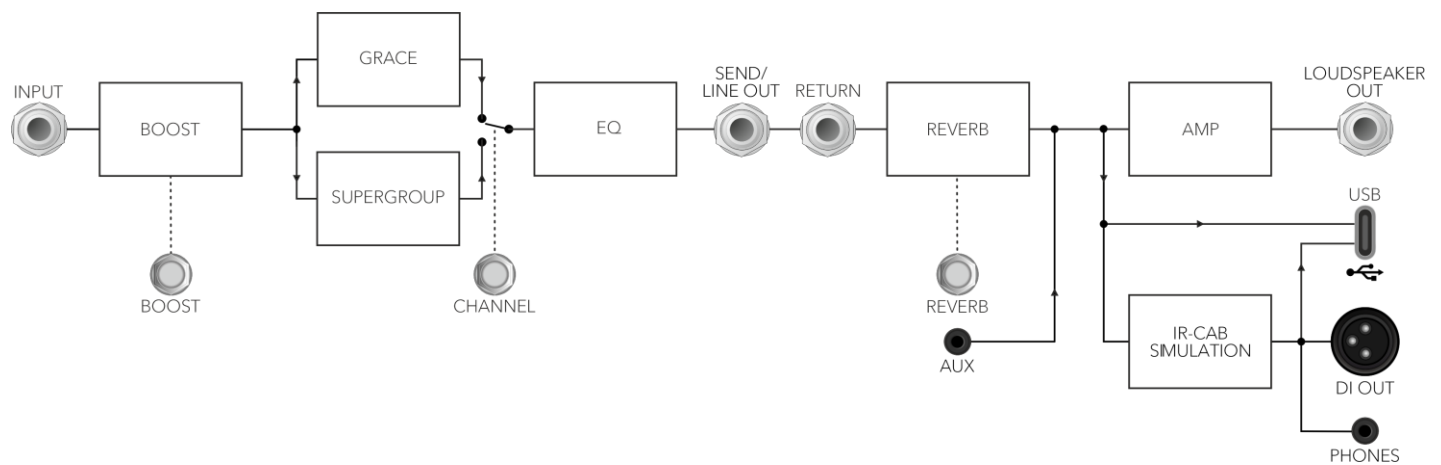


SPECIFICATIONS

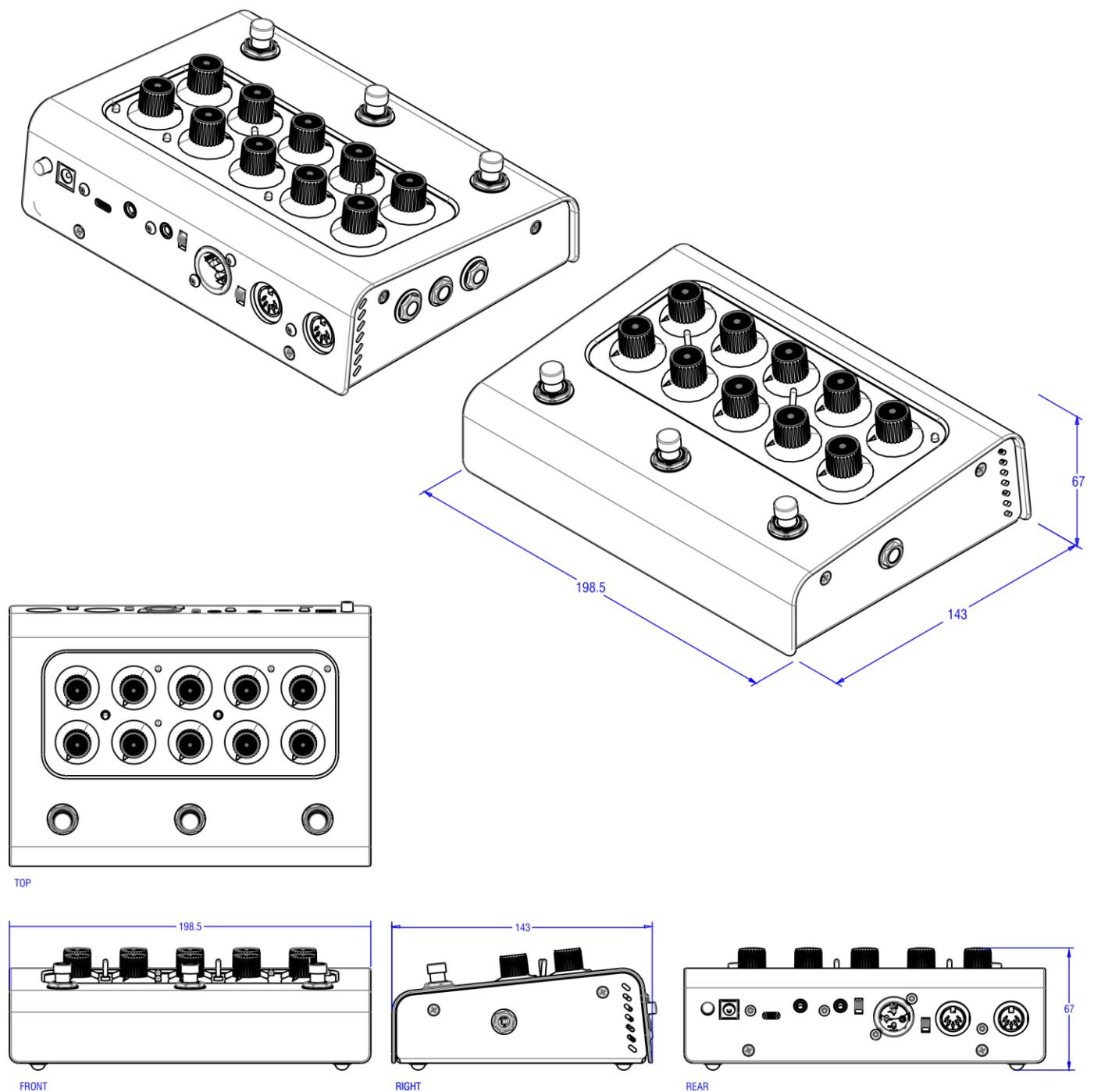
Model No	SUPERGRACE
SKU Code	BCC-SUPERGRACE
Name	Laney SUPERGRACE LOUDPEDAL - 60-Watt designed in collaboration with Billy Corgan & Brian Carstens
Type	Pedal Board Guitar Amplifier
Input Impedance	1M Ω
Amplifier Power	60W RMS
Amps	'grace' and "SUPERGROUP" (Footswitchable)
EQ	Bass, Middle, Treble (Passive tone stack), Overall Tone Control, and bright switch on the 'grace' amp
Effects	Digital Springline Reverb (Footswitchable), External FX Loop
Controls	Pre-Boost, 'grace' amp:- volume, gain, bright switch. "SUPERGROUP" amp:- Volume, Gain, Gain mode - Dimed & Clean, Bass, Middle, Treble, Tone, Reverb, Channel Footswitch, Reverb Footswitch, Boost Footswitch
Indicators	LEDs for Boost, 'grace' Channel, 'SUPERGROUP' Channel, and Reverb
Inputs	6.3mm (1/4") Mono Instrument Input Jack, 6.3mm FX Return jack, 3.5mm stereo Aux In jack
Outputs	6.3mm Transformer Isolated FX Send (Doubles as Line Out), 3.5mm stereo headphone jack, Balanced Male XLR DI out with two LA-IR Speaker Emulated Irs
Other	USB Type-C for Class compliant audio streaming @48kHz (Emulated and unemulated main out) and accessing LA-IR app
Power Supply	Regulated 24V 2.5A 60W DC PSU Included: Centre Positive, 2.1 x 5.5 x 12mm connector type
Typical Power Consumption	60W
Unit dimensions (HWD)	67 x 199 x 143mm, (2.6" x 7.8" x 5.6")
Unit weight	1.7Kg, (3.7 lbs)
Carton dimensions (HWD)	129 x 238 x 182mm, (5.1" x 9.4" x 7.2"), 0.006 M3
Packed Weight	2.1Kg, (4.6 lbs)
EAN Code (Single)	5061098770171



BLOCK DIAGRAM



DIMENSIONS (in mm)



SAFETY AND WARNINGS







To take full advantage of your new product and enjoy long and trouble-free performance, please read this owner's manual carefully, and keep it in a safe place for future reference.

MANUFACTURER: HEADSTOCK DISTRIBUTION LTD. STEELPARK ROAD,
COOMBS WOOD BUSINESS PARK WEST, HALESOWEN, B62 8HD, UK

- 1) Unpacking: On unpacking your product, please check carefully for any signs of damage that may have occurred whilst in transit from the Laney factory to your dealer. In the unlikely event that there has been damage, please re-pack your unit in its original carton and consult your dealer. We strongly advise you to keep your original transit carton, since in the unlikely event that your unit should develop a fault, you will be able to return it to your dealer for rectification securely packed.
- 2) Amplifier Connection: To avoid damage, generally it is advisable to establish and follow a pattern for turning on and off your system. With all system parts connected, turn on source equipment, mixers, effects processors etc, BEFORE turning on your amplifier. Many products have large transient surges at turn on and off which can cause damage to your speakers. By turning on your amplifier LAST and making sure its level control is set to a minimum, any transients from other equipment should not reach your loudspeakers. Wait till all system parts have stabilised, usually a couple of seconds. Similarly, when turning off your system always turn down the level controls on your amplifier and then turn off its power before turning off other equipment.
- 3) Cables: Never use shielded or microphone cable for any speaker connections as this will not be substantial enough to handle the amplifier load and could cause damage to your complete system. Use good quality shielded cables everywhere else.
- 4) Servicing: The user should not attempt to service these products. Refer all servicing to qualified service personnel.
- 5) Heed all warnings.
- 6) Follow all instructions.
- 7) Do not use this apparatus near water.
- 8) Clean only with a dry cloth.
- 9) Do not block any of the ventilation openings. Install in accordance with manufacturer's instructions.
- 10) Do not install near any heat sources such as radiators, heat registers, stoves, or other apparatus (including amplifiers) that produce heat.
- 11) An apparatus with Class I construction shall be connected to a mains socket outlet with a protective connection. Do not defeat the safety purpose of the polarized or grounding-type plug. A polarized plug has two blades with one wider than the other. A grounding type plug has two blades and a third grounding prong. The wide blade or third prong is provided for your safety. If the provided plug does not fit into your outlet, consult an electrician for replacement of the obsolete outlet.
- 12) Protect the power cord from being walked on or pinched, particularly at plugs, convenience receptacles, and the point they exit from the apparatus.
- 13) Only use attachments/accessories provided by the manufacturer.
- 14) Use only with a cart, stand, tripod, bracket, or table specified by the manufacturer, or sold with the apparatus. When a cart is used, use caution when moving the cart/apparatus combination to avoid injury from tip-over.
- 15) The mains plug or appliance coupler is used as the disconnect device and shall remain readily operable. The user should allow easy access to any mains plug, mains coupler and mains switch used in conjunction with this unit thus making it readily operable. Unplug this apparatus during lightning storms or when unused for long periods of time.
- 16) Refer all servicing to qualified service personnel. Servicing is required when the apparatus has been damaged in any way, such as when power-supply cord or plug is damaged, liquid has been spilled or objects have fallen into the apparatus, the apparatus has been exposed to rain or moisture, does not operate normally, or has been dropped.
- 17) Never break off the ground pin. Connect only to a power supply of the type marked on the unit adjacent to the power supply cord.
- 18) If this product is to be mounted in an equipment rack, rear support should be provided.
- 19) Note for UK only: If the colours of the wires in the mains lead of this unit do not correspond with the terminals in your plug, proceed as follows:
 - o The wire that is coloured green and yellow must be connected to the terminal that is marked by the letter E, the earth symbol, coloured green or coloured green and yellow.
 - o The wire that is coloured blue must be connected to the terminal that is marked with the letter N or the colour black.
 - o The wire that is coloured brown must be connected to the terminal that is marked with the letter L or the colour red.
- 20) This electrical apparatus should not be exposed to dripping or splashing and care should be taken not to place objects containing liquids, such as vases, upon the apparatus.
- 21) Exposure to extremely high noise levels may cause a permanent hearing loss. Individuals vary considerably in susceptibility to noise-induced hearing loss, but nearly everyone will lose some hearing if exposed to sufficiently intense noise for a sufficient time. The U.S. Government's Occupational Safety and Health Administration (OSHA) has specified the following permissible noise level exposures: According to OSHA, any exposure more than the above permissible limits could result in some hearing loss. Earplugs or protectors to the ear canals or over the ears must be worn when operating this amplification system to prevent a permanent hearing loss, if exposure is more than the limits as set forth above. To ensure against potentially dangerous exposure to high sound pressure levels, it is recommended that all persons exposed to equipment capable of producing high sound pressure levels such as this amplification system be protected by hearing protectors while this unit is in operation.
In the EU, exposure is regulated under Directive 2003/10/EC. Prolonged exposure above 85 dB(A) can cause hearing damage. Hearing protection must be used when operating equipment capable of producing high sound pressure levels.
- 22) If your appliance features a tilting mechanism or a kickback style cabinet, please use this design feature with caution. Due to the ease with which the amplifier can be moved between straight and tilted back positions, only use the amplifier on a level, stable surface. DO NOT operate the amplifier on a desk, table, shelf or otherwise unsuitable non-stable platform.
- 23) Symbols & nomenclature used on the product and in the product manuals, intended to alert the operator to areas where extra caution may be necessary, are as follows:

Duration Per Day in Hours	Sound Level dBA, slow response
8	90
6	92
4	95
3	97
2	100
1 1/2	102
1	105
1/2	110
1/4 ou inférieur	115



 CAUTION:	<p>Intended to alert the user to the presence of uninsulated 'Dangerous Voltage' within the products enclosure that may be sufficient to constitute a risk of electrical shock to persons.</p> <p>Ce symbole est utilisé pur indiquer a l'utilisateur de ce produit de tension non-isolée dangereuse pouvant être d'intensité suffisante pour constituer un risque de choc électrique.</p> <p>Este símbolo tiene el propósito de alertar al usuario de la presencia de '(voltaje) peligroso' que no tiene aislamiento dentro de la caja del producto que puede tener una magnitud suficiente como para constituir riesgo de corrientazo.</p> <p>Dieses Symbol soll den Anwender vor unisolierten gefährlichen Spannungen innerhalb des Gehäuses warnen, die von ausreichender Stärke sind, um einen elektrischen Schlag verursachen zu können.</p>
 WARNING:	<p>Intended to alert the user of the presence of important operating and maintenance (Servicing) instructions in the literature accompanying the product.</p> <p>Destiné à alerter l'utilisateur de la présence d'instructions importantes d'exploitation et de maintenance (entretien) dans la documentation accompagnant le produit.</p> <p>Este símbolo tiene el propósito de la alertar al usuario de las presencias de instrucciones importantes sobre la operación y mantenimiento en la literatura que viene con el producto.</p> <p>Dieses Symbol soll den Benutzer auf wichtige Instruktionen in der Bedienungsanleitung aufmerksam machen, die Handhabung und Wartung des Produkts betreffen.</p>
CAUTION: ATTENTION : PRECAUCION: VORSICHT:	<p>Risk of electrical shock - DO NOT OPEN. To reduce the risk of electrical shock, do not remove the cover. No user serviceable parts inside. Refer servicing to qualified personnel.</p> <p>Risques de choc électrique - NE PAS OUVIRIR. Afin de réduire le risque de choc électrique, ne pas enlever le couvercle. Il ne se trouve a l'intérieur aucune pièce pouvant être réparée par l'utilisateur. Confier l'entretien a un personnel qualifié.</p> <p>Riesgo de descarga eléctrica - NO ABRIR. Para reducir el riesgo de descarga eléctrica, no quite la cubierta. No hay piezas reparables por el usuario en el interior. Remita el servicio a personal calificado.</p> <p>Risiko - Elektrischer Schlag! Nicht offen! Um das Risiko eines elektrischen Schlages zu vermeiden, nicht die Abdeckung entfernen. Es befinden sich keine Teile darin, die vor Anwender repariert werden konnten. Reparaturen nur von qualifiziertem Fachpersonal durchführen lassen.</p>
WARNING: ADVERTISSEMENT : ADVERTENCIA: ACHTUNG:	<p>To prevent electrical shock or fire hazard, do not expose this appliance to rain or moisture. Before using this appliance, please read the operating instructions for further warnings.</p> <p>Afin de prévenir les risques de décharge électrique ou de feu, n'exposez pas cet appareil a la pluie ou a l'humidité. Avant d'utiliser cet appareil, lisez les avertissements supplantais situés dans le guide.</p> <p>Para evitar descargas eléctricas o peligro de incendio, no exponga este aparato a la lluvia ni a la humedad. Antes de usar este aparato, lea las instrucciones de funcionamiento para conocer más advertencias.</p> <p>Um einen elektrischen Schlag oder Feuergefahr zu vermeiden, sollte dieses Gerät nicht dem Regen oder Feuchtigkeit ausgesetzt werden. Vor Inbetriebnahme unbedingt die Bedienungsanleitung lesen.</p>
	<p>This device complies with Part 15 of the FCC rules Operation is subject to the following two conditions:</p> <ol style="list-style-type: none"> 1) This device may not cause harmful interference. 2) This device must accept any interference received, that may cause undesired operation. <p>Warning: Changes or modification to the equipment not approved by Laney can void the user's authority to use the equipment.</p> <p>Note: This equipment has been tested and found to comply with the limits for Class B digital device, pursuant to Part 15 of the FCC Rules. These limits are designed to provide reasonable protection against harmful interference in a residential installation. This equipment generates, uses and can radiate radio frequency energy and if not installed and used in accordance with the instructions, may cause harmful interference to radio communications. However, there is no guarantee that interference will not occur in a particular installation. If this equipment does cause harmful interference to radio or television reception, which can be determined by turning the equipment off and on, the user is encouraged to try and correct the interference by one or more of the following measures. Reorient or relocate the receiving antenna. Increase the separation between the equipment and receiver. Connect the equipment into an outlet on a circuit different from that to which the receiver is connected. Consult the dealer or an experienced radio/TV technician for help.</p>
	<p>This product conforms to the requirements of the following European Regulations, Directives & Rules: CE Mark (93/68/EEC), Low Voltage (2014/35/EU), EMC (2014/30/EU), RoHS (2011/65/EU), ErP (2009/125/EU)</p> <p>SIMPLIFIED EU DECLARATION OF CONFORMITY</p> <p>Full text of the EU declaration of conformity is available at the following internet address:</p> <p>http://support.laney.co.uk/approvals</p>
	<p>The object of the declaration described above is in conformity with the relevant statutory requirement Electrical Equipment (Safety) Regulations 2016, Electromagnetic Compatibility Regulations 2016, The Restriction of the use of Certain Hazardous Substances in Electrical and Electronic Equipment Regulations 2012, The Ecodesign for Energy-Related Products and Energy Information, (Amendment) (EU Exit) Regulations 2012</p>
	<p>In order to reduce environmental damage, at the end of its useful life, this product must not be disposed of along with normal household waste to landfill sites. It must be taken to an approved recycling centre according to the recommendations of the WEEE (Waste Electrical and Electronic Equipment) directive applicable in your country.</p>

BLACK COUNTRY CUSTOMS™

HANDCRAFTED IN THE UK



LANEY AMPLIFICATION

STEELPARK ROAD, COOMBSWOOD BUSINESS PARK WEST, HALESOWEN, B62 8HD. UK
FOR THE LATEST INFORMATION PLEASE VISIT WWW.LANEY.CO.UK

**IN THE INTEREST OF CONTINUED DEVELOPMENT, LANEY RESERVES THE RIGHT TO
AMEND PRODUCT SPECIFICATION WITHOUT PRIOR NOTIFICATION.**