

PRISM

MINI



FIRMWARE UPDATES



CONTENTS

FIRMWARE UPDATER - EN.....	2
MAC OS INSTALL - EN.....	2
WINDOWS INSTALL - EN	4
RUNNING THE UPDATER - EN	5
TROUBLE SHOOTING	6
Windows.....	6
MAC.....	6

FIRMWARE UPDATER - EN

You can check the latest firmware available on our website <https://software.laney.co.uk/Tone-Wizard/download.html>

Check the firmware loaded to your Prism-Mini in the Global Menu under About. If the firmware is not the latest version, please download the new version update to ensure the best user experience.

To update the firmware on your PRISM-MINI, you will first need to install the PRISM-MINI Firmware updater application to your computer.



Additional instructions in your language are available in the full manuals available on our site above.

MAC OS INSTALL - EN

Once the installer is downloaded, run it and follow the instructions. Run the installer to opening the installer window and start the installation process.

Press 'Continue' on the Introduction page to go to the Destination Select page. Once the destination has been selected, press 'Continue' to proceed to the 'Installation Type'.

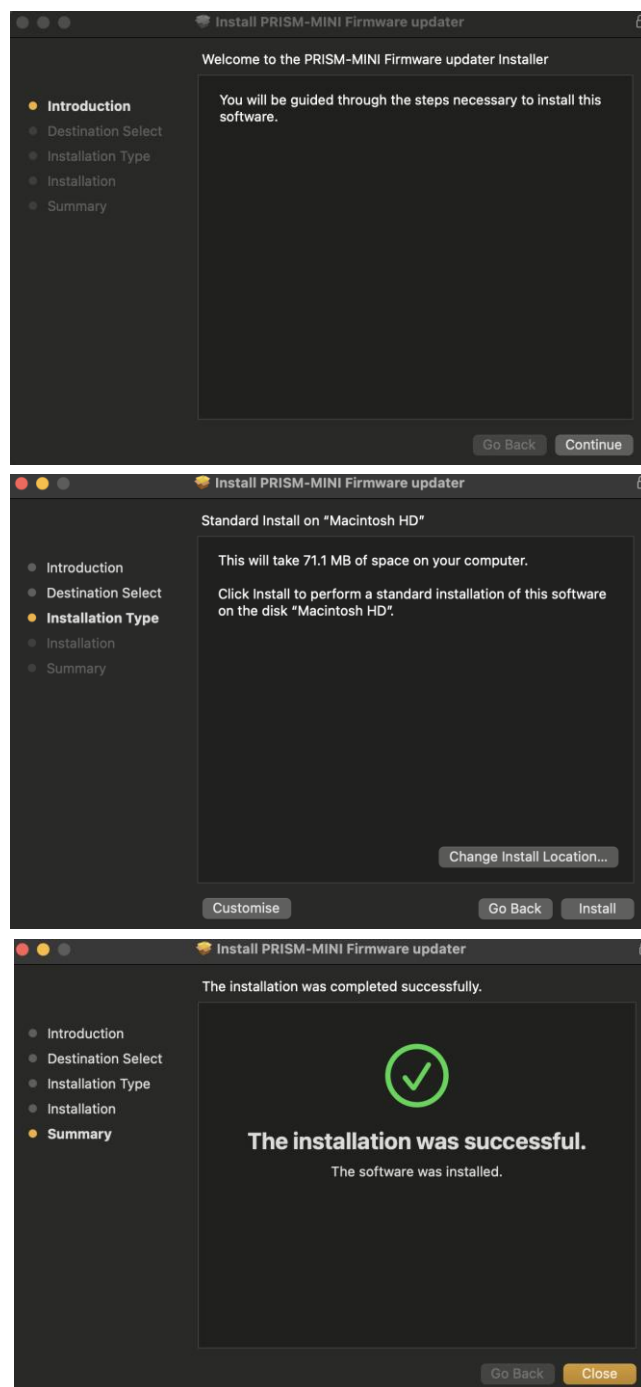
This Installation Type shows the full size of the installation as well as the option to change the install directory for the application. The directory must have enough space for the firmware updater application.

Use the 'Change Install Location' button to choose a new directory.

Press 'Install' to start the actual install.

Once complete the installation will show it was successful, allowing you to finish the process by pressing 'Close'.

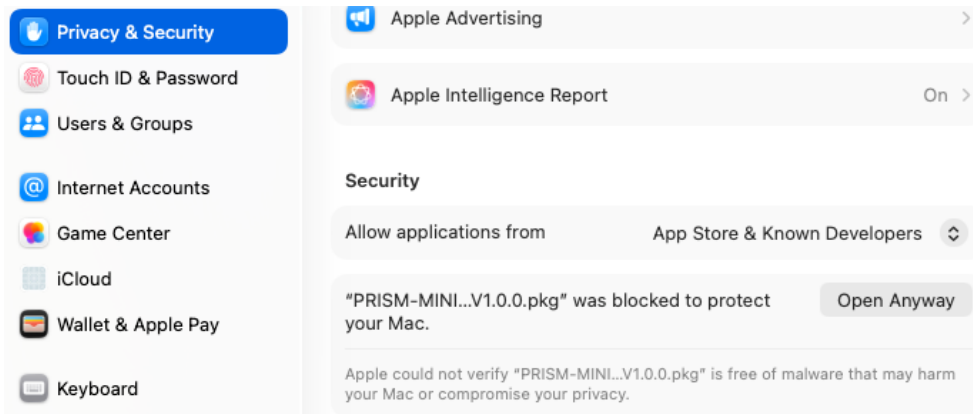
MacOS® is a trademark of Apple Inc.



Depending on your version of macOS, when you run the updater for the first time macOS may block running of the app. Similar to this :



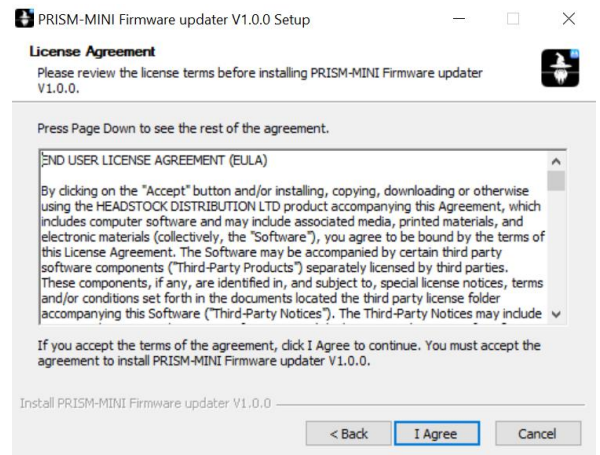
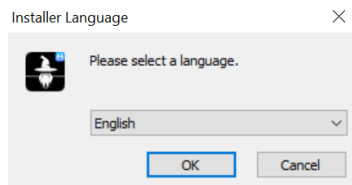
If this happens, you should go to system settings/Privacy and Security and then select 'Open Anyway' It should then run without issues.



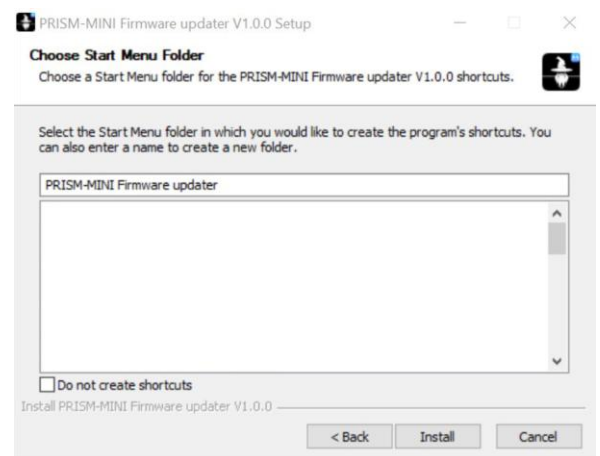
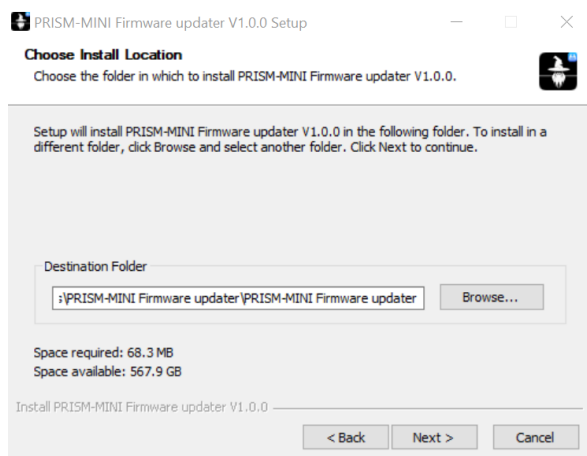
WINDOWS INSTALL - EN

Once the installer is downloaded, run it and follow the instructions.

Select your language, and press 'Next', then agree to the EULA to continue. *Note the version of your setup installer may be a later version compared to what is shown in these images.*

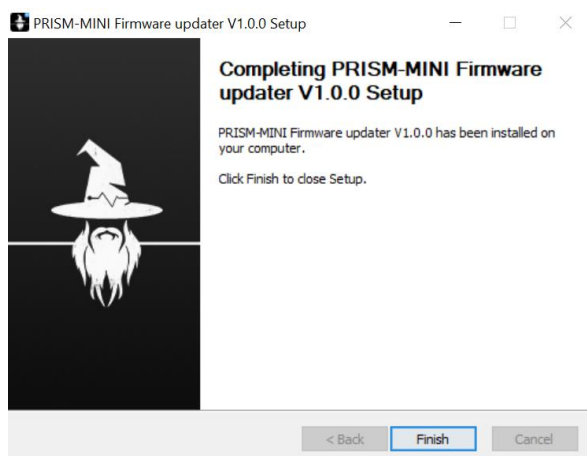


Choose your install location for the firmware updater, this should default to the Program Files folder.



Then choose a location in your start folder for the app shortcut to be located. By default, this will be in the root folder of your start menu. Alternatively tick the 'Do not create shortcuts' box to disable this feature.

Finally press 'Install' and the Firmware updater will be installed. If successfully installed, the final window below will display, press 'Finish' to end the installation process.

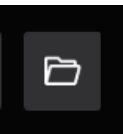
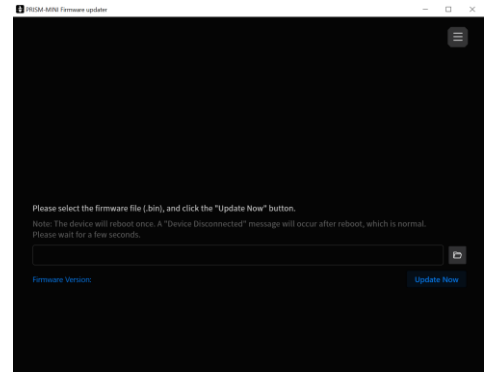


Windows® is a trademark of the Microsoft group of companies.

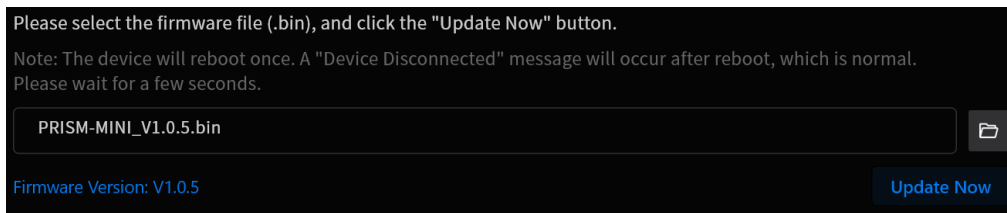
RUNNING THE UPDATER - EN

Once installed, launch the firmware updater. Initially, with no PRISM-MINI connected, you will only be able to view the current app version and change the language. Changing language will require a restart.

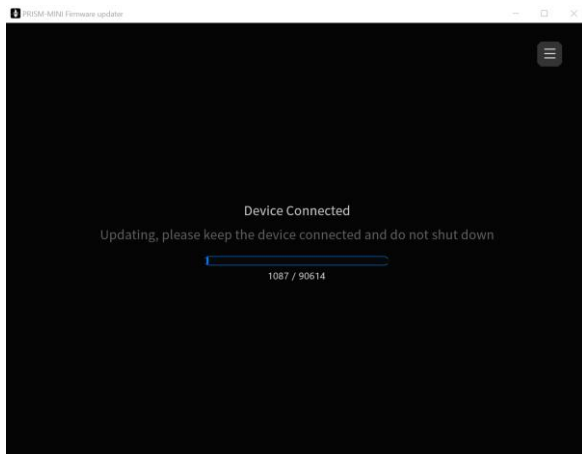
Connect your PRISM-MINI to the computer via the USB socket, and power it on. The app will automatically register the connection and change to the updater window.



Use the folder button to browse your local files and select the latest firmware .bin that you downloaded earlier. Select the downloaded firmware on the app to update the device with.



The firmware you selected will appear in the browser, with the firmware version shown in blue below. Press 'Update Now' to update the connected PRISM-MINI to the selected firmware.



The firmware updating page will display and show the progress of the update. This should appear immediately. The application progress bar will run to completion and the display on the PRISM-MINI will show that it is currently updating.

Please do not disconnect the PRISM-MINI or close the app while the update progress bar is shown.

The update may take a few minutes. Once complete, the PRISM-MINI will restart and launch with the new firmware. Once finished, you should perform a factory reset to ensure a clean start. You can do this in

Global/Reset/Continue.



TROUBLE SHOOTING

If for some reason the FIRMWARE update is not successfully completed and the unit display reads

Updating/restoring in progress. Please don't shut down!

Please follow the instructions below for your operating system

Windows

Option 1

- Simply disconnect the PRISM-MINI from the computer by removing the USB-C connector from the PRISM-MINI.
- Reconnect the USB-C connector to the PRISM-MINI and run the firmware update again. The update will complete and the unit should be factory reset as described above.

If option 1 does not resolve the issue then,

Option 2

- Open Device Manager
- Find the Laney device - PRISM-MINI
- Right-click → Update driver
- Browse my computer for drivers
- Let me pick from a list of available drivers
- Change USBMidi2-ACX to USB Audio Device
- Run the firmware update again
- (This is a known issue caused by Microsoft Update (KB5074105) (Build 26200.7705) patch)
-

After switching to USB Audio Device, the update will complete and the unit should be factory reset as described above.

MAC

Option 1

- Simply disconnect the PRISM-MINI from the computer by removing the USB-C connector from the PRISM-MINI.
- Reconnect the USB-C connector to the PRISM-MINI and run the firmware update again. The update will complete and the unit should be factory reset as described above.



LANEY AMPLIFICATION
STEELPARK ROAD, COOMBSWOOD BUSINESS PARK WEST, HALESOWEN, B62 8HD. UK
FOR THE LATEST INFORMATION PLEASE VISIT WWW.LANEY.CO.UK

**IN THE INTEREST OF CONTINUED DEVELOPMENT, LANEY RESERVES THE RIGHT TO AMEND
PRODUCT SPECIFICATION WITHOUT PRIOR NOTIFICATION**

V1.0