



**LFR-412**  
**FRFR CABINET**  
**USER MANUAL**



**CONTENTS**

INTRODUCTION ..... 2

    FEATURES ..... 2

CONTROLS ..... 3

CONNECTING THE LFR-412 ..... 5

    CONNECTING THE INPUTS..... 5

    CONNECTING THE DI OUT ..... 5

    CONNECT TWO LFR-412 ..... 6

    CONNECT TO PC VIA USB ..... 6

SPECIFICATIONS ..... 11

    BLOCK DIAGRAM ..... 12

    DIMENSIONS (in mm)..... 13

    STACKED DIMENSIONS (in mm)..... 14

SAFETY AND WARNINGS ..... 15

## **INTRODUCTION**

Laney are the first amplifier brand to develop a REAL solution for players using a digital rig, providing players with a stylish and imposing sound presence on stage.

As that market has grown, so too has the LFR's reputation as the market leader in powered full range, flat response (FRFR) guitar cabinets.

Following the momentous success of our LFR-112 and LFR-212 powered cabinets, we have decided to offer up the World's first 4x12 dedicated FRFR guitar cabinet. The LFR-412

The Laney LFR-412 offers you an incredible 2600 Watts, an industry leading and best in class powered cabinet filled with output options. Ensuring the perfect partnership for whichever profiler you choose to pair it with.

The LFR-412 features LA·IR (Laney Advance Impulse Response) technology that uses 56bit FIR filters to provide stunning cabinet emulations. The LFR-412 ships with two IRs (Impulse Responses) designed and used by the legendary guitarist Devin Townsend. The USB connectivity allows you to load your own IRs, and the LA·IR LFR app allows for further adjustment. Housing the IR in the cabinet frees up processing power within your digital rig, allowing for greater creativity and reliability. In short; the LFR-412 does the heavy lifting.

The LFR-412 joins a range of Laney LFR powered cabinets that all feature tailor-made drivers, designed and engineered by HH Acoustics to deliver power, precision and importantly a response that gives you the feeling of a real guitar cabinet by your side. Why is this so? Well, with over 55 years of amplification and cabinet design experience, we understand the thrill of feeling the air move to you, the player, and your amp and cab. The LFR-412 offers an authentic response that feels familiar to you in comparison to other options on the market.

These FRFR powered cabinets are raising the bar and redefining the standards that you expect from your digital rig, all in an aesthetic package that guarantees to turn heads.

## **FEATURES**

- 2600W Higher Power Asymmetric Class-D Power Amplifier
- LA·IR Dual Selectable High Quality Digital IR for Cabinet and XLR out
- LA·IR is Laney Advance Impulse Response technology, using 56bit FIR filters to provide high quality cabinet emulation
- Ultra Low Noise Design
- High Dynamic Range allows for hot and cold signal levels in
- Comprehensive Inputs and Outputs
- Volume and HF trim controls
- USB type B interface to adjust IR presets and cabinet EQ through the supplied LA·IR LFR app
- Road Ready Plywood Construction
- HH Designed Professional Loudspeakers
- 100-240V Universal Voltage, IEC C14, lead included
- USB Type-B to Type-A cable included, as well as Type-A to Type-C adapter

## CONTROLS



### 1. VOLUME CONTROL

Volume attenuator for signal input to the LFR-412. Will mute at 0 and should be turned down if the SIGNAL LED is lit red. Note that the aux input bypasses this volume control.

### 2. 3.5mm STEREO AUX INPUT SOCKET

Audio input socket intended for adding backing tracks to your playing. Bypasses the volume control and any loaded IRs and EQ.

### 3. POWER AND SIGNAL LEDS

- Power LED will light green whenever the LFR-412 is plugged in and powered on.
- Signal LED will light green whenever the LFR-412 detects a signal present at the input socket. This will turn red when a signal begins clipping at the preamp stage. Avoid this ever turning red by turning down the volume or input level.
- Clip LED will light red when the internal amplifier is clipping. This is ok for a short while but should be avoided over longer periods of time.

#### 4. INPUT SOCKET

A balanced XLR / 6.3mm jack combi socket for your main audio signal input. Ideally use with a balanced audio line, especially over long cable distances, to avoid noise interference. The Laney LFR-412 features HDR technology to accommodate for a range of line input levels.

#### 5. HF TRIM CONTROL

Tailor the cabinets high frequency response to your environment. A HF shelving filter set at 3kHz, increase, or decrease the high end of your signal quickly and easily.

#### 6. LINK OUT W/ GROUND LIFT

Link out XLR socket that directly returns your input signal with no alteration whatsoever. Link to another active cab to extend your system further. A ground lift switch is included to potentially reduce any ground hum.

#### 7. USB TYPE B SOCKET

Connect the provided USB-B to USB-A cable to a Windows or Mac PC to access the LFR-412's IR presets and cabinet EQ via the downloadable LA·IR LFR app.

#### 8. FRONT LED STRIP SWITCH

Turn on and off the LED downlight strip found on the front panel of the Laney LFR-412 cabinet.

#### 9. CABINET IR SWITCH

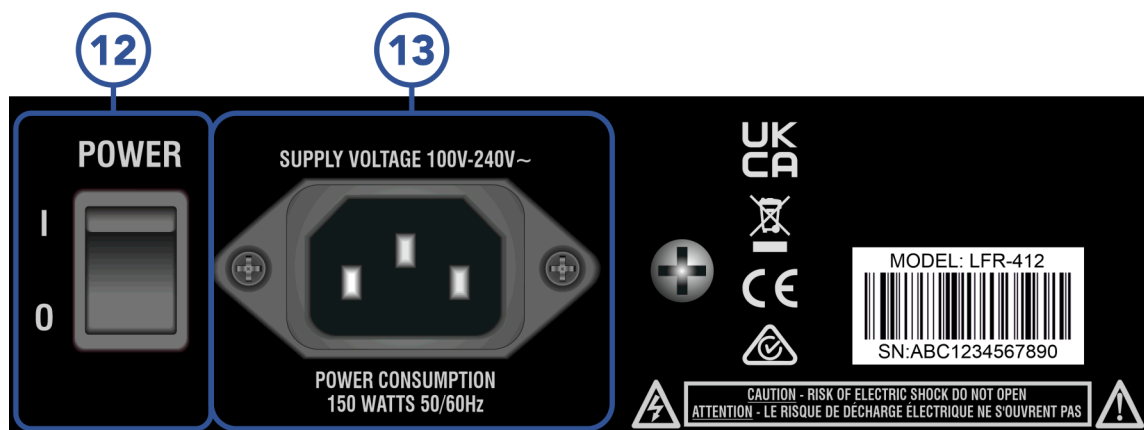
Load an IR preset for the LFR-412 cabinet. Choose from FRFR (completely flat EQ), CAB A or CAB B - preset IRs that can be modified through the LA·IR LFR app.

#### 10. DI OUT IR SWITCH

Load an IR preset for the DI out. Choose from FRFR, CAB A or CAB B - preset IRs that can be modified through the LA·IR LFR app.

#### 11. EMULATED DI OUT W/ GROUND LIFT

A balanced XLR output socket at line level. The EQ and gain of this channel can be modified in the LA·IR LFR app. Ground lift switch included to potentially reduce ground hum.



#### 12. POWER SWITCH

Turns the LFR-412 on and off when the correct power lead is connected.

#### 13. MAINS INLET SOCKET

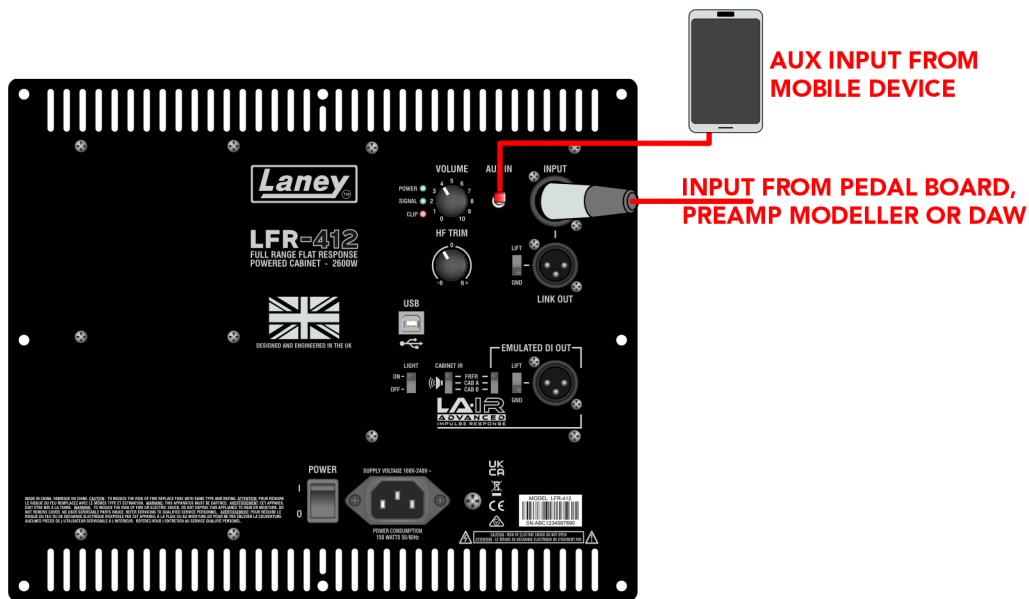
Universal IEC input to connect the provided mains lead.

## CONNECTING THE LFR-412

### CONNECTING THE INPUTS

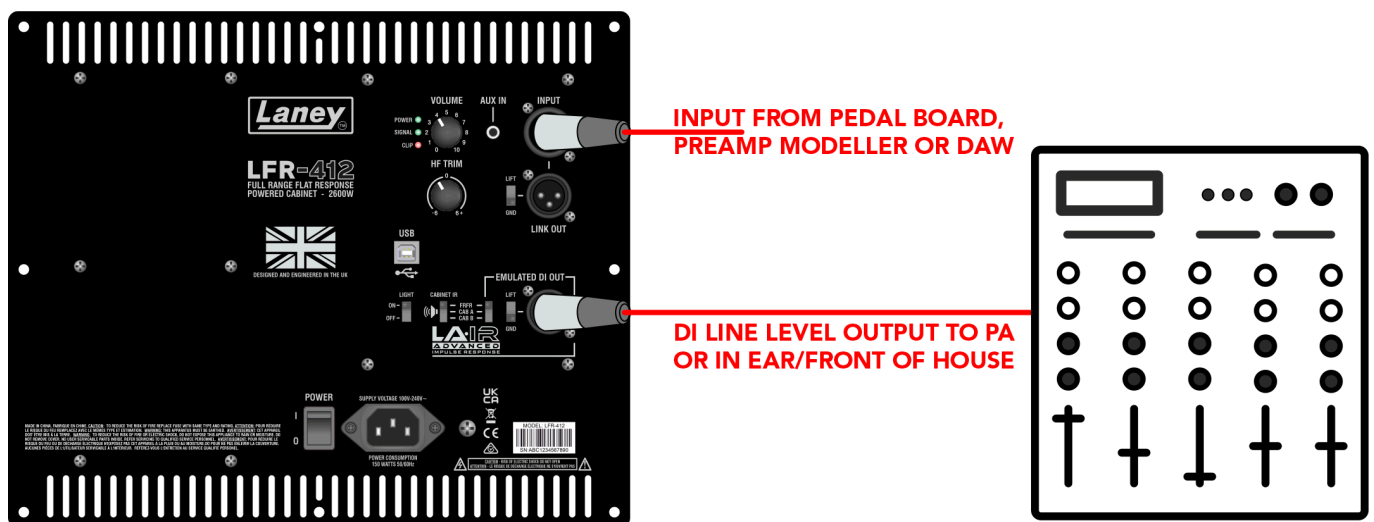
The Laney LFR-412 has two input sockets. An XLR / 6.3mm combi jack for your balanced guitar signal input as well as a 3.5mm aux in to connect a backing track via a media player such as your mobile phone. The aux in is post volume, user EQ and IR emulation so will not be affected by any tone changes.

Thanks to the LFR-412's high dynamic range, the input can accept hot and cold line level signals. Just make sure the signal LED does not turn red as this indicates the front end is clipping, which can cause long term damage to the LFR-412.



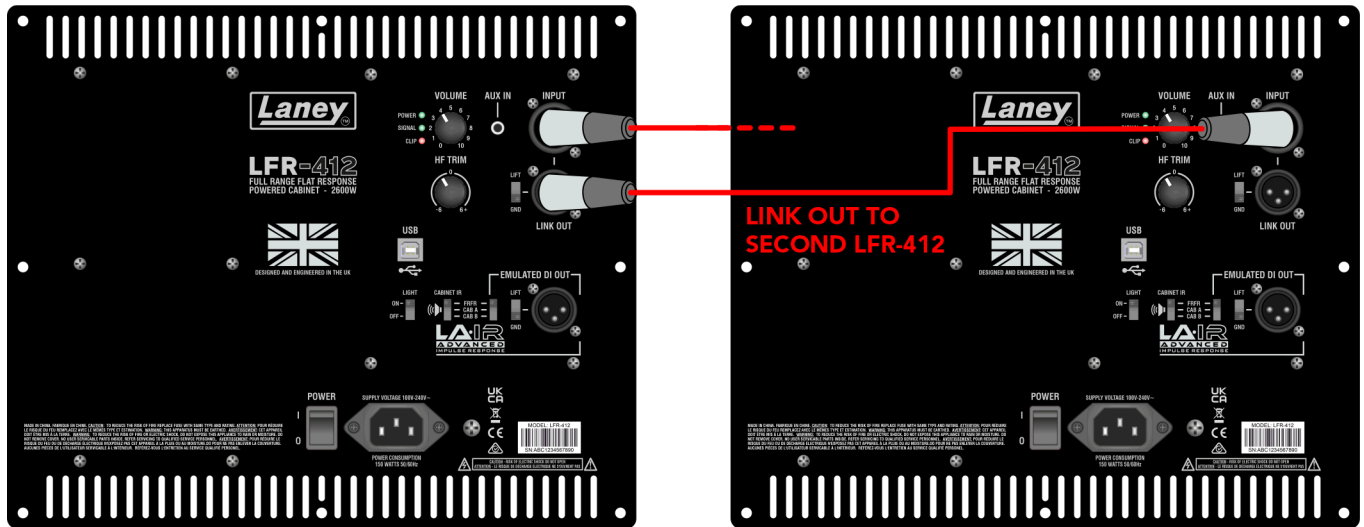
### CONNECTING THE DI OUT

The XLR DI-out provides a balanced line level output to connect to your PA, front of house or in ear monitors. Unaffected by the volume or trim controls, the DI out has its own cabinet emulation and user loaded EQ that applies separately to the cabinet EQ/IR's.



## CONNECT TWO LFR-412

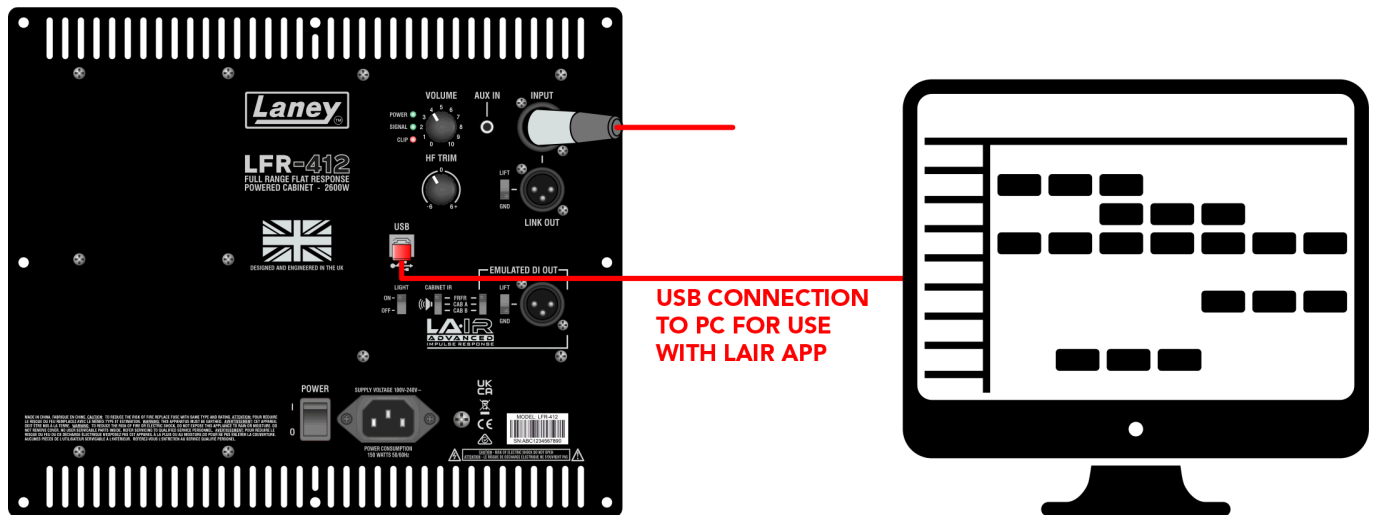
Two LFR-412's can be connected via the link out provided. An XLR socket direct from the input, connect this to another LFR-412's input socket. Note that the LFR-412 is stackable, allowing two units to be placed on top of one another



## CONNECT TO PC VIA USB

Connect to a Windows or Mac computer via the USB Type-B socket. A Type-B to Type-A cable is provided as well as a Type-A to Type-C adapter depending on your computer's USB ports.

From here you can download the LA·IR LFR app provided by Laney, to load your own IRs and tweak the 8 band EQ for both the cabinet itself and the DI-out. Change these on the fly whilst playing to hear your changes live and save these for later use when gigging or practicing.



## THE LA·IR APP

Through the purchase of your LFR-412, you also have access to Laney's very own LA·IR app. The app allows you to expand the sound of your LFR-412 even further by switching out the loaded IRs with your own as well as offering an 8-band parametric EQ for each cab IR and DI IR.

All this can be done on the fly during practice, so you can hear the change in your sound as you go.

The app runs on **Windows 10/11** and **Mac OS**.

## DOWNLOAD & INSTALLATION

To download the software, visit the [LFR-412 product page](#) on our website. Choose the correct installer for your OS.

### WINDOWS

Once downloaded, run the *Setup-LAIR\_x64.exe* found in the downloads folder in file explorer. Follow the installer's instructions, accepting the EULA and choosing a suitable location for the install, then press Install to complete.

### MAC

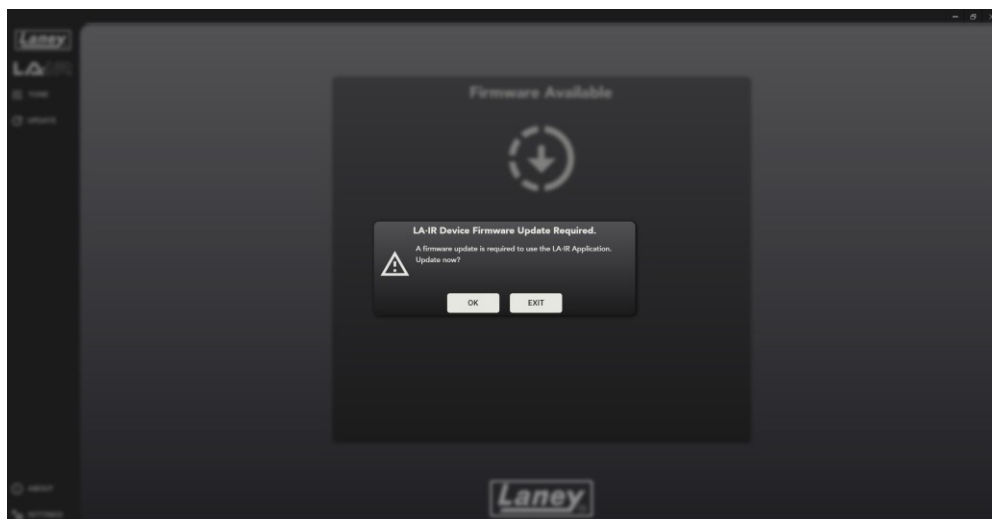
Once the *.dmg* file has been downloaded, drag this into the applications folder to complete the install. Launch the LA·IR app from this folder location from now on.

### LA·IR UPDATE

The app will automatically prompt you for an update upon startup should a new version be released. We recommend accepting any updates as they may include new features or bug fixes.

### FIRMWARE UPDATE

Similarly, with your LFR-412 connected and powered on, you will be notified if any firmware updates are available. Again, we recommend allowing any updates that come through so as to improve your user experience.



Minor updates may not show as a pop-up so be sure to check the update panel from time to time, where these can be accessed.



## USING THE APP

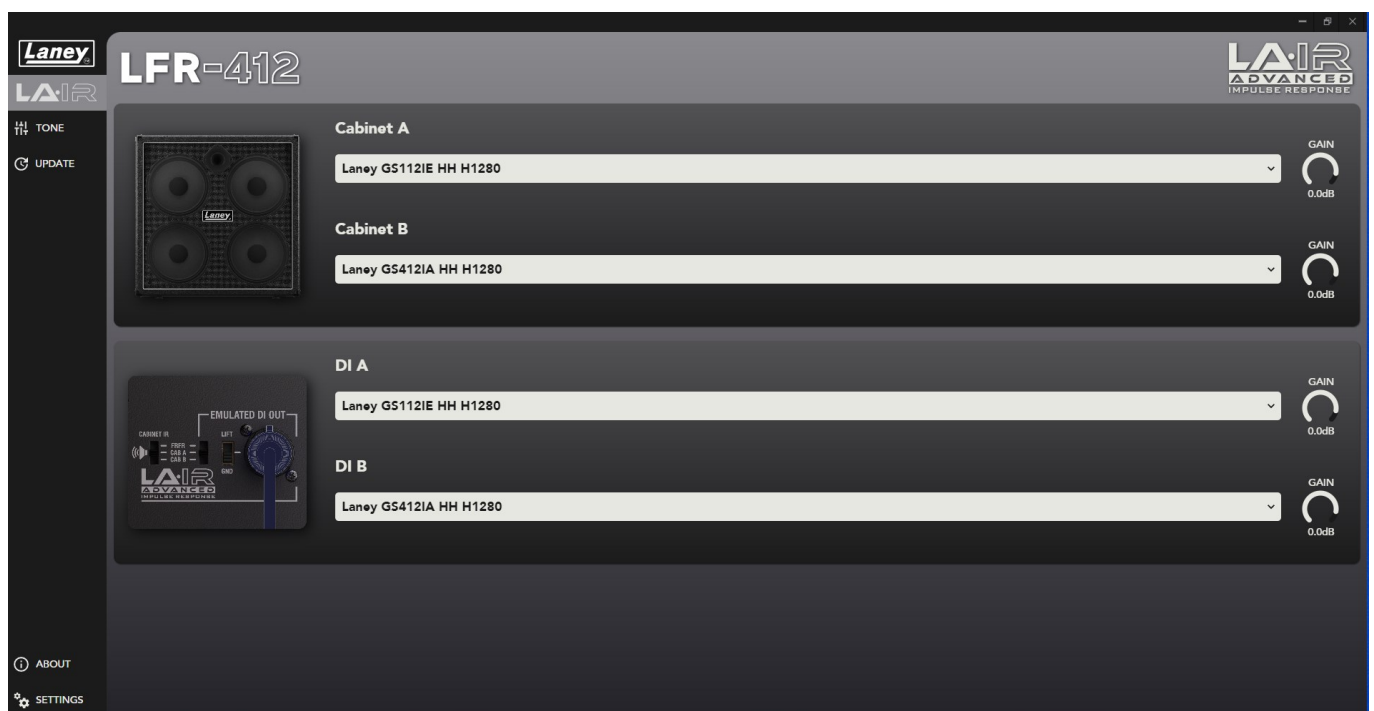
### CONNECTING THE LFR-412

Connecting the LFR-412 is easily done via the USB-C cable provided with the pedal in the box. Plug one end into the USB-C socket on the pedal and the other into your computer that has the app downloaded.

Can be plugged into a computer with either USB-C or A sockets – simply use the USB A to C adaptor provided.

### CHANGING THE IRs

Aside from the two preloaded IRs, the app can be used to add and swap in any of your own IRs. To load your own User IR, click the drop-down box under either cab A/B or DI A/B and select "Import IR" – only .wav files with a 48kHz sample rate can be used. The app will convert your IR into the .Lair file format that the amp can use. Do not worry, your original .wav file will not be deleted! Two of Laney's own 1x12 cab and 4x12 cab IRs are also included with the app, as shown below.



It is possible to edit the name of User IRs as well as delete them from the pedal and the app. To do so, right click on any IRs under the "User" section and press "EDIT" or "DELETE". The default System IRs cannot be deleted.

***WARNING: Deleting a User IR is permanent and cannot be reversed. The only way to get the IR back is to re-import the original .wav file***

### CHANGING THE GAIN

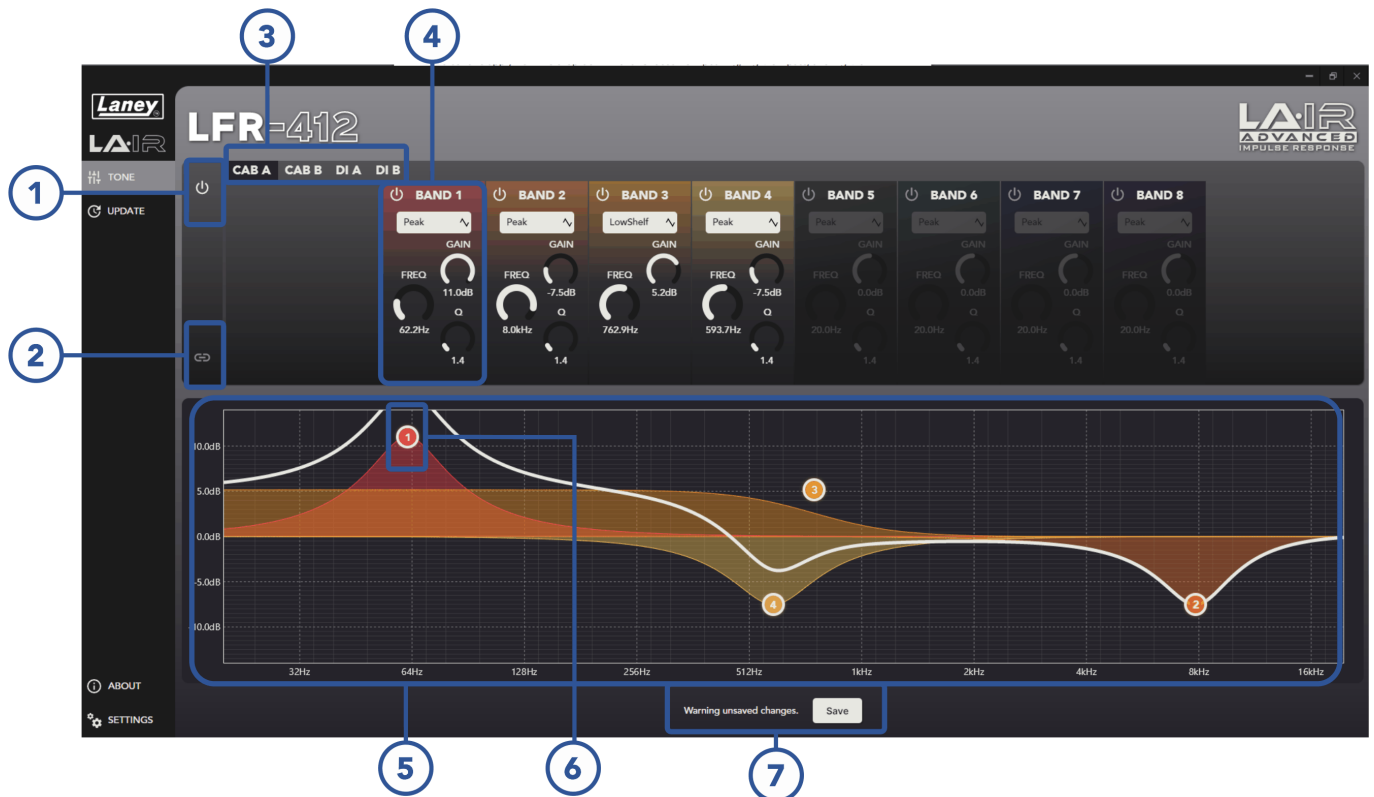
The gain of each cab IR can also be changed individually via the radial control on the right-hand side, should they be too loud/quiet. This gain will be saved to the IR's .Lair file so will remain when using the pedal without the app.

Simply drag the slider, or alternatively use your mouse scroll wheel or double click and manually type the gain you want (in dB). Ranges from -40dB to +6dB.

## CHANGING THE EQ

The LA·IR app also comes with an 8-band parametric EQ for each cab IR and DI IR. 5 different filters are available, along with easy-to-use controls allowing you to change the gain, frequency and Q factor depending on the filter applied.

**WARNING: Any EQ changes will be permanently lost if the app is closed/disconnected without saving!**



### 1. EQ TOGGLE

Turn on and off the EQ for all IRs (Cabs and Dis), can be useful for dry/wet testing.

### 2. A+B LINK

Link the EQs you have currently selected. If you have either Cab EQs selected, they will be linked, and the same for the DI EQs. EQ A will always be followed when linked. Unlinking will revert EQ B to its previous state.

### 3. DI/CAB SELECT

Choose which cab/DI you want to edit the EQ for. Selected is highlighted in black.

### 4. BAND CONTROLS

The main controls for each band are found here. Turn the band on and off and change filter you want the band to apply from the drop-down menu. Choose from peaking, high/low pass, and high/low shelf.

Additionally, 3 radial sliders are available to change the gain, centre frequency and Q factor of the filter. The value of each slider can be changed by dragging, using your mouse scroll wheel, or double clicking the number and manually typing in your desired value. Depending on the filter selected, 1 or multiple of these controls will be available.

### 5. FREQUENCY RESPONSE GRAPH

This graph displays the resultant frequency response of all the EQ bands. View your changes live to easily see how your sound will be affected. Additionally, each band is colour coded so you can visualize which filter is doing what.

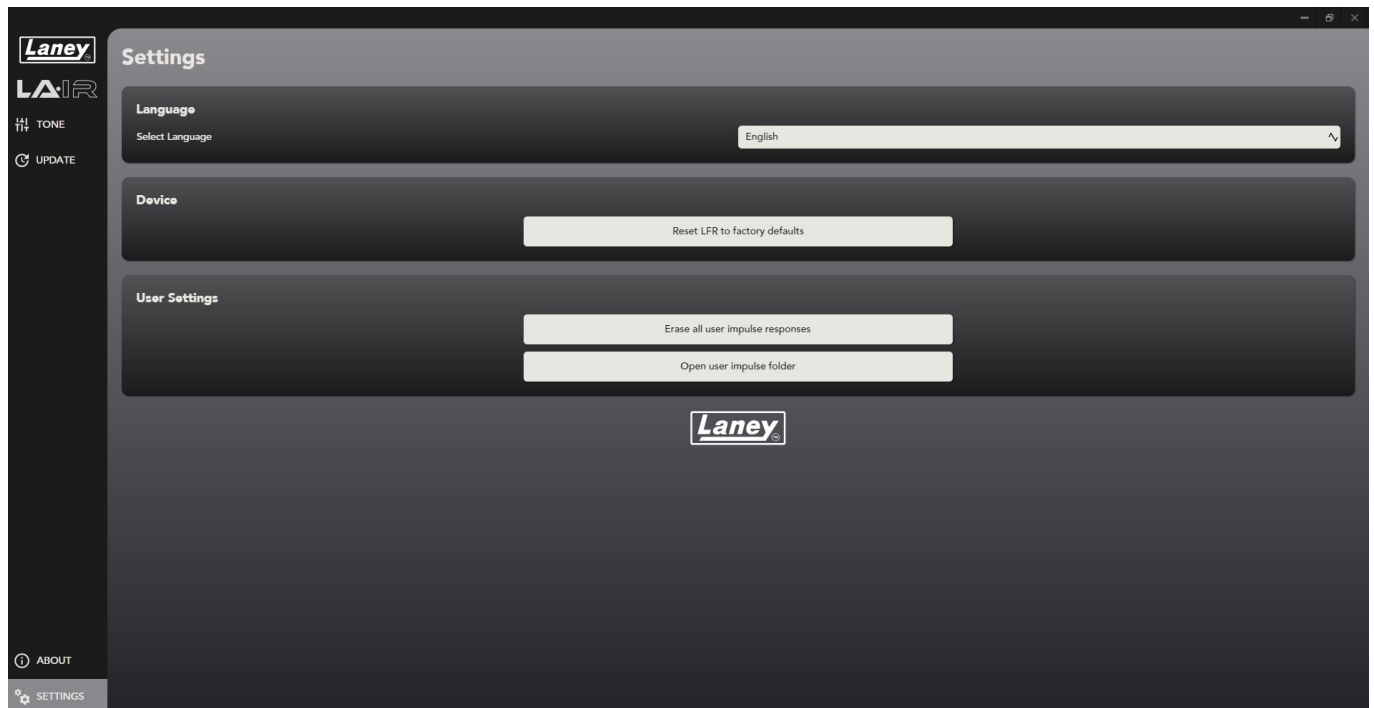
## 6. BAND NODE

The graph also shows a numbered node representing each band currently active. Showing the current centre frequency and gain, these are draggable to allow for quick and easy changes. For more precise changes we recommend using the band controls (4).

## 7. SAVE BUTTON

Press this to save any unsaved changes to the EQs (Cab A/B and DI A/B), so they can be stored on the pedal and used without the app. Should any unsaved changes be present, this will be visible to alert you that closing the app (or disconnecting the pedal) will lose these changes.

## SETTINGS PANEL



### LANGUAGE

Change the language of the LA-IR app to your preferred language.

### RESET DEVICE

This will reset all EQ and gain changes as well as return the IRs back to the default Laney ones. This cannot be undone and all changes from the default will be lost.

### ERASING THE USER IRS

Delete **all** user IRs from the app. These are impossible to get back unless you have the original .wav file to import again so be sure you want to do this. A pop-up warning will show before deleting.

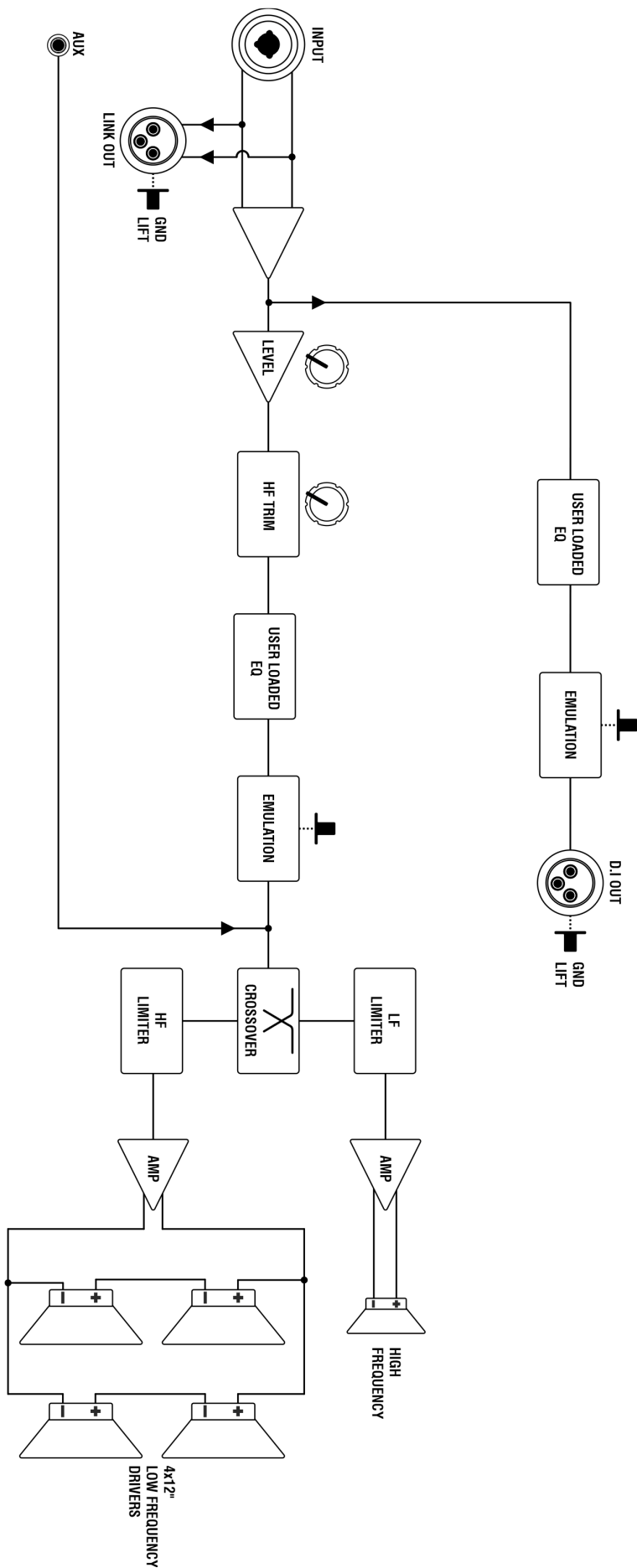
### OPEN USER IR FOLDER

Open the folder where all your imported IRs are stored.

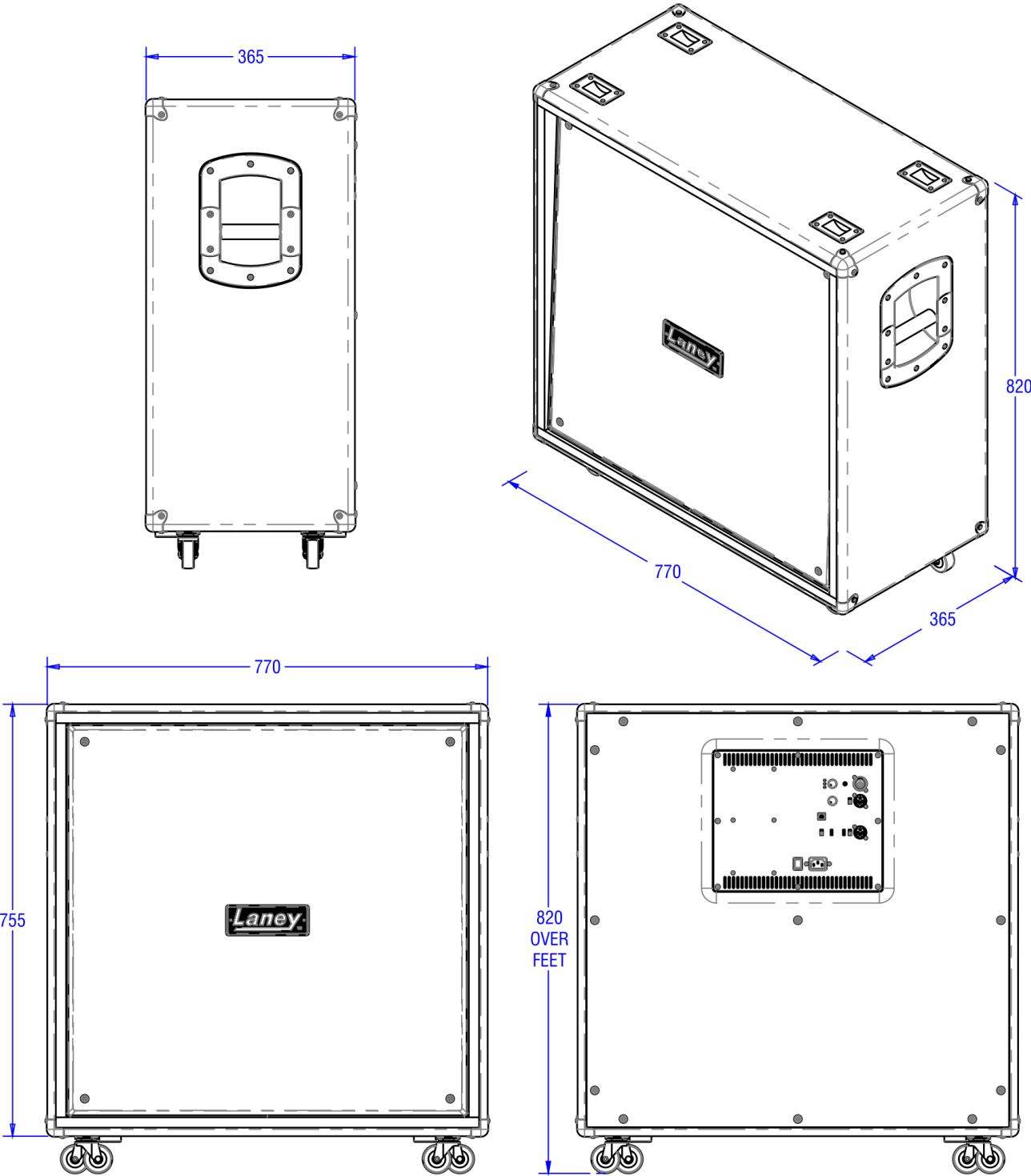
## SPECIFICATIONS

Model	<i>LFR-412</i>
Type	<i>Full Frequency Range Flat Response Powered 4x12" Cabinet</i>
Frequency response (-3)	<i>48-18kHz</i>
Max SPL (1M)	<i>135 dB SPL, 138 dB SPL (Peak)</i>
Power Rating	<i>2600W Peak, 1300W Continuous, 650W RMS</i>
Input	<i>Balanced Female XLR/Jack Combi, 3.5mm Stereo aux in</i>
Output	<i>Balanced Male XLR DI Out, Balanced Male XLR Link Out</i>
Controls	<i>Volume, HF Trim, Speaker, and DI out Emulation Switch, Ground lift, Light switch.</i>
Other	<i>USB type B socket for access to LAIR app, allows IR loading, EQ adjustment.</i>
Illumination	<i>Front illuminated downlight strip</i>
HF Driver	<i>1" LaVoce DF10 Horn</i>
LF Driver	<i>4x 12" HH Designed Black Series 30050 Professional Woofers</i>
Crossover Frequency	<i>3kHz</i>
Enclosure	<i>15mm Plywood Construction. Twin Sealed Chambers</i>
Handles	<i>Side Mounted, easy grab steel bar handles</i>
Castors	<i>Removeable, Push Fit Castors Included. (Castor Cups allow easy stacking)</i>
Finish	<i>Hard wearing black vinyl, Black Metal Corners</i>
Unit dimensions (HWD)	<i>820 x 770 x 365mm, 32.3" x 30.3" x 14.4"</i>
Unit weight	<i>43.3Kg, 95.5 lbs</i>
Carton dimensions (HWD)	<i>920 x 880 x 480mm, 36.2" x 34.6" x 18.9", 0.389 M3</i>
EAN Code	<i>5060109458787</i>

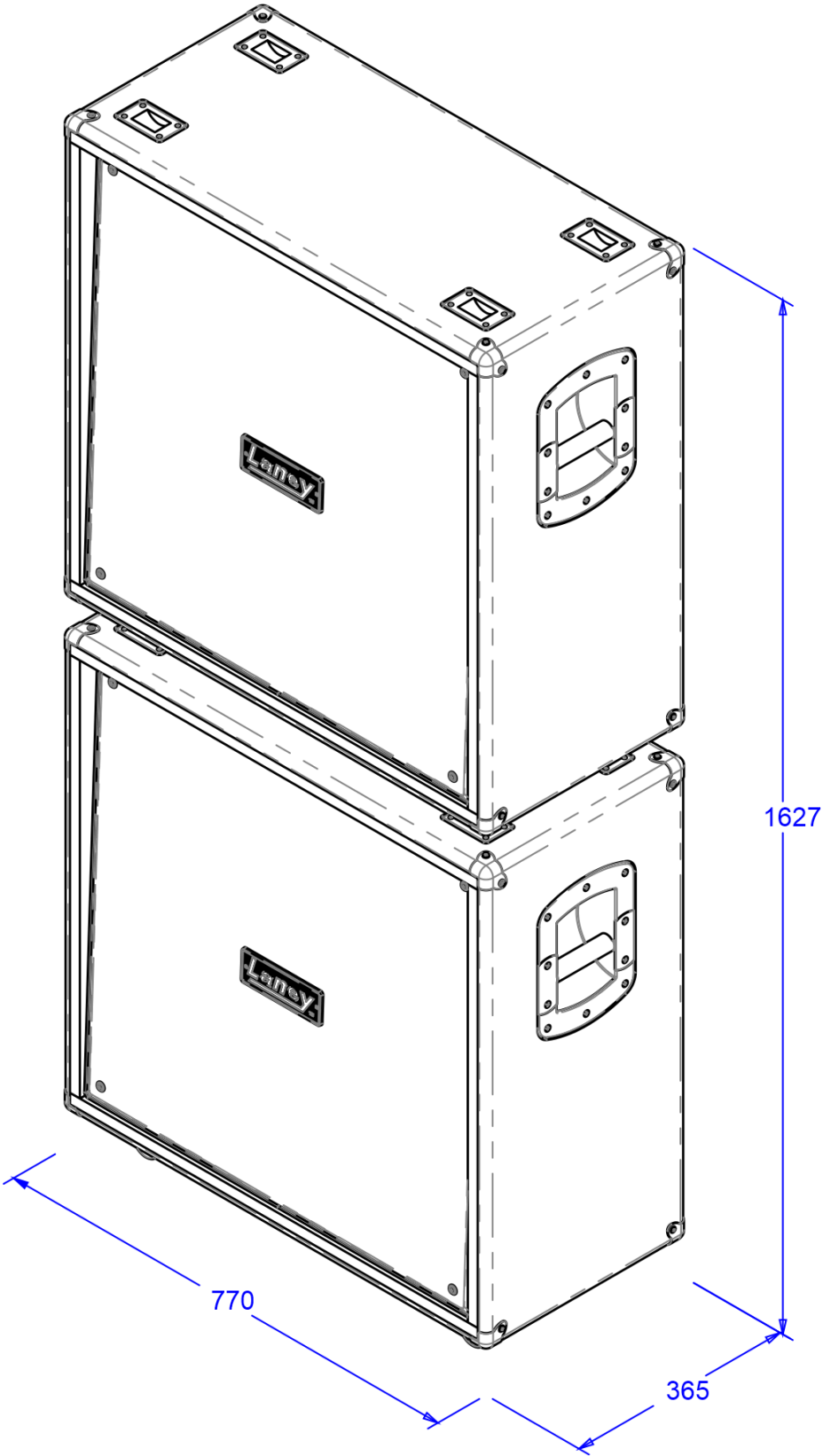
BLOCK DIAGRAM



DIMENSIONS (in mm)



STACKED DIMENSIONS (in mm)









# SAFETY AND WARNINGS

In order to take full advantage of your new product and enjoy long and trouble-free performance, please read this owner's manual carefully, and keep it in a safe place for future reference.

- 1) **Unpacking:** On unpacking your product please check carefully for any signs of damage that may have occurred whilst in transit from the Laney factory to your dealer. In the unlikely event that there has been damage, please re-pack your unit in its original carton and consult your dealer. We strongly advise you to keep your original transit carton, since in the unlikely event that your unit should develop a fault, you will be able to return it to you dealer for rectification securely packed.
- 2) **Amplifier Connection:** In order to avoid damage, Generally it is advisable to establish and follow a pattern for turning on and off your system. With all system parts connected, turn on source equipment, mixers, effects processors etc, BEFORE turning on your amplifier. Many products have large transient surges at turn on and off which can cause damage to your speakers. By turning on your amplifier LAST and making sure its level control is set to a minimum, any transients from other equipment should not reach your loud speakers. Wait till all system parts have stabilised, usually a couple of seconds. Similarly when turning off your system always turn down the level controls on your amplifier and then turn off its power before turning off other equipment.
- 3) **Cables:** Never use shielded or microphone cable for any speaker connections as this will not be substantial enough to handle the amplifier load and could cause damage to your complete system. Use good quality shielded cables everywhere else.
- 4) **Servicing:** The user should not attempt to service these products. Refer all servicing to qualified service personnel.
- 5) Heed all warnings.
- 6) Follow all instructions.
- 7) Do not use this apparatus near water.
- 8) Clean only with a dry cloth.
- 9) Do not block any of the ventilation openings. Install in accordance with manufacturer's instructions.
- 10) Do not install near any heat sources such as radiators, heat registers, stoves or other apparatus (including amplifiers) that produce heat.
- 11) An apparatus with Class I construction shall be connected to a mains socket outlet with a protective connection. Do not defeat the safety purpose of the polarized or grounding-type plug. A polarized plug has two blades with one wider than the other. A grounding type plug has two blades and a third grounding prong. The wide blade or third prong is provided for your safety. If the provided plug does not fit into your outlet, consult an electrician for replacement of the obsolete outlet.
- 12) Protect the power cord from being walked on or pinched, particularly at plugs, convenience receptacles, and the point they exit from the apparatus.
- 13) Only use attachments/accessories provided by the manufacturer.
- 14) Use only with a cart, stand, tripod, bracket, or table specified by the manufacturer, or sold with the apparatus. When a cart is used, use caution when moving the cart/apparatus combination to avoid injury from tip-over.
- 15) The mains plug or appliance coupler is used as the disconnect device and shall remain readily operable. The user should allow easy access to any mains plug, mains coupler and mains switch used in conjunction with this unit thus making it readily operable. Unplug this apparatus during lightning storms or when unused for long periods of time.
- 16) Refer all servicing to qualified service personnel. Servicing is required when the apparatus has been damaged in any way, such as when power-supply cord or plug is damaged, liquid has been spilled or objects have fallen into the apparatus, the apparatus has been exposed to rain or moisture, does not operate normally, or has been dropped.
- 17) Never break off the ground pin. Connect only to a power supply of the type marked on the unit adjacent to the power supply cord.
- 18) If this product is to be mounted in an equipment rack, rear support should be provided.
- 19) Note for UK only: If the colours of the wires in the mains lead of this unit do not correspond with the terminals in your plug, proceed as follows:
  - o The wire that is coloured green and yellow must be connected to the terminal that is marked by the letter E, the earth symbol, coloured green or coloured green and yellow.
  - o The wire that is coloured blue must be connected to the terminal that is marked with the letter N or the colour black.
  - o The wire that is coloured brown must be connected to the terminal that is marked with the letter L or the colour red.
- 20) This electrical apparatus should not be exposed to dripping or splashing and care should be taken not to place objects containing liquids, such as vases, upon the apparatus.
- 21) Exposure to extremely high noise levels may cause a permanent hearing loss. Individuals vary considerably in susceptibility to noise-induced hearing loss, but nearly everyone will lose some hearing if exposed to sufficiently intense noise for a sufficient time. The U.S. Government's Occupational Safety and Health Administration (OSHA) has specified the following permissible noise level exposures: According to OSHA, any exposure in excess of the above permissible limits could result in some hearing loss. Earplugs or protectors to the ear canals or over the ears must be worn when operating this amplification system in order to prevent a permanent hearing loss, if exposure is in excess of the limits as set forth above. To ensure against potentially dangerous exposure to high sound pressure levels, it is recommended that all persons exposed to equipment capable of producing high sound pressure levels such as this amplification system be protected by hearing protectors while this unit is in operation.

Duration Per Day in Hours	Sound Level dBA, slow response
8	90
6	92
4	95
3	97
2	100
1 1/2	102
1	105
1/2	110
1/4 ou inférieur	115
- 22) If your appliance features a tilting mechanism or a kickback style cabinet, please use this design feature with caution. Due to the ease with which the amplifier can be moved between straight and tilted back positions, only use the amplifier on a level, stable surface. DO NOT operate the amplifier on a desk, table, shelf or otherwise unsuitable non-stable platform.
- 23) Symbols & nomenclature used on the product and in the product manuals, intended to alert the operator to areas where extra caution may be necessary, are as follows:



 <p><b>CAUTION:</b></p>	<p>Intended to alert the user to the presence of uninsulated 'Dangerous Voltage' within the products enclosure that may be sufficient to constitute a risk of electrical shock to persons.</p> <p>Ce symbole est utilise pur indiquer a l'utilisateur de ce produit de tension non-isolee dangereuse pouvant etre d'intensite suffisante pour constituer un risque de choc electrique.</p> <p>Este simbolo tiene el proposito de alertar al usuario de la presencia de '(voltaje) peligroso' que no tiene aislamiento dentro de la caja del producto que puede tener una magnitud suficiente como para constituir riesgo de corrientazo.</p> <p>Dieses Symbol soll den Anwender vor unsolierten gefahrlichen Spannungen innerhalb des Gehauses warnen, die von Ausreichender Starke sind, um einen elektrischen Schlag verursachen zu konnen.</p>
 <p><b>WARNING:</b></p>	<p>Intended to alert the user of the presence of important operating and maintenance (Servicing) instructions in the literature accompanying the product.</p> <p>Dieses Symbol soll den Anwender vor unsolierten gefahrlichen Spannungen innerhalb des Gehauses warnen, die von Ausreichender Starke sind, um einen elektrischen Schlag verursachen zu konnen.</p> <p>Este simbolo tiene el proposito de la alertar al usuario de la presencis de instrucccones importantes sobre la operacion y mantenimiento en la literatura que viene conel producto.</p> <p>Dieses Symbol soll den Benutzer auf wichtige Instruktionen in der Bedienungsanleitung aufmerksam machen, die Handhabung und Wartung des Produkts betreffen.</p>
<p>CAUTION:</p> <p>ATTENTION:</p> <p>PRECAUCION:</p> <p>VORSICHT:</p>	<p>Risk of electrical shock - DO NOT OPEN. To reduce the risk of electrical shock, do not remove the cover. No user serviceable parts inside. Refer servicing to qualified personnel.</p> <p>Risques de choc electrique - NE PAS OUVRIR. Afin de reduire le risque de choc electrique, ne pas enlever le couvercle. Il ne se trouve a l'interieur aucune piece pouvant etre reparee par l'utilisateur. Confier l'entretien a un personnel qualifie.</p> <p>Riesgo de corrientazo - no abra. Para disminuir el risego de carrientazo, no abra la cubierta. No hay piezas adentro que el pueda reparar. Deje todo mantenimiento a los tecnicos calificado.</p> <p>Risiko - Elektrischer Schlag! Nicht offen! Um das Risiko eines elektrischen Schlages zu vermeiden, nicht die Abdeckung entfernen. Es befinden sich keine Teile darin, die von Anwender repariert werden Konnten. Reparaturen nur von qualifiziertem Fachpersonal durchfuhren lassen.</p>
<p>WARNING:</p> <p>ADVERTISSEMENT:</p> <p>ADVERTENCIA:</p> <p>ACHTUNG:</p>	<p>To prevent electrical shock or fire hazard, do not expose this appliance to rain or moisture. Before using this appliance please read the operating instructions for further warnings.</p> <p>Afin de prevenir les risques de decharge electrique ou de feu, n'exposez pas cet appareil a la pluie ou a l'humidite. Avant d'utiliser cet appareil, lisez les advertissements supplentaires situes dans le guide.</p> <p>Para evitar corrientazos o peligro de incendio, no deja expuesto a la lluvia o humedad este aparato Antes de usar este aparato, lea mas advertcias en la gua de operacion.</p> <p>Um einen elektrischen Schalg oder Feuergefahr zu vermeiden, sollte dieses Gerat nicht dem Regen oder Feuchtigkeit ausgesetzt werden. Vor Inbetriebnahme unbedingt die Bedienungsanleitung lesen.</p>
	<p>This device complies with Part 15 of the FCC rules Operation is subject to the following two conditions:</p> <ol style="list-style-type: none"> <li>1) This device may not cause harmful interference</li> <li>2) This device must accept any interference received, that may cause undesired operation.</li> </ol> <p>Warning: Changes or modification to the equipment not approved by Laney can void the user's authority to use the equipment.</p> <p>Note: This equipment has been tested and found to comply with the limits for Class B digital device, pursuant to Part 15 of the FCC Rules. These limits are designed to provide reasonable protection against harmful interference in a residential installation. This equipment generates, uses and can radiate radio frequency energy and if not installed and used in accordance with the instructions, may cause harmful interference to radio communications. However, there is no guarantee that interference will not occur in a particular installation. If this equipment does cause harmful interference to radio or television reception, which can be determined by turning the equipment off and on, the user is encouraged to try and correct the interference by one or more of the following measures. Reorient or relocate the receiving antenna. Increase the separation between the equipment and receiver. Connect the equipment into an outlet on a circuit different from that to which the receiver is connected. Consult the dealer or an experienced radio/TV technician for help.</p>
	<p>This product conforms to the requirements of the following European Regulations, Directives &amp; Rules: CE Mark (93/68/EEC), Low Voltage (2014/35/EU), EMC (2014/30/EU), RoHS (2011/65/EU), ErP (2009/125/EU)</p> <p>SIMPLIFIED EU DECLARATION OF CONFORMITY</p> <p>Hereby, Laney Electronics Ltd. declares that the radio equipment is in compliance with Directives 2014/53/EU, 2011/65/EU, 2009/125/EU. Full text of the EU declaration of conformity is available at the following internet address:</p> <p><a href="http://support.laney.co.uk/approvals">http://support.laney.co.uk/approvals</a></p>
	<p>The object of the declaration described above is in conformity with the relevant statutory requirement Electrical Equipment (Safety) Regulations 2016, Electromagnetic Compatibility Regulations 2016, The Restriction of the use of Certain Hazardous Substances in Electrical and Electronic Equipment Regulations 2012, The Ecodesign for Energy-Related Products and Energy Information, (Amendment) (EU Exit) Regulations 2012</p>
	<p>In order to reduce environmental damage, at the end of its useful life, this product must not be disposed of along with normal household waste to landfill sites. It must be taken to an approved recycling centre according to the recommendations of the WEEE (Waste Electrical and Electronic Equipment) directive applicable in your country.</p>



STEELPARK ROAD, COOMBSWOOD BUSINESS PARK WEST, HALESOWEN, B62 8HD. UK  
FOR THE LATEST INFORMATION PLEASE VISIT [WWW.LANEY.CO.UK](http://WWW.LANEY.CO.UK)

**IN THE INTEREST OF CONTINUED DEVELOPMENT, LANEY RESERVES THE RIGHT TO AMEND PRODUCT SPECIFICATION WITHOUT PRIOR NOTIFICATION.**

V1.1

