

BLACK COUNTRY CUSTOMS™

HANDCRAFTED IN THE UK



IN COLLABORATION
WITH

Tom Quayle
TOM QUAYLE

LIONHEART-LOUDPEDAL USER MANUAL



DESIGNED, ENGINEERED & MADE IN THE U.K.

CONTENTS

INTRODUCTION	2
FEATURES	2
INCLUDED IN THE BOX	2
CONTROLS	3
TOP VIEW	3
REAR VIEW	5
RIGHT SIDE VIEW	6
LEFT SIDE VIEW	6
BOTTOM VIEW	7
HOW TO CONNECT THE BCC-LOUDPEDAL-LTQ	8
MIDI.....	12
THE LA-IR APP	13
DOWNLOAD & INSTALLATION	13
USING THE APP	14
EXAMPLE SETTINGS.....	17
SPECIFICATIONS	19
DIMENSIONS (in mm).....	20
SAFETY AND WARNINGS	21



INTRODUCTION

The LIONHEART-LOUDPEDAL built in the UK and developed in conjunction with Tom Quayle, a long-term Laney artist is designed to be the tone engine of a flexible pedal board setup with a feature set that replicates the acclaimed LIONHEART all-tube tonal range - with the addition of a non-LIONHEART feature - a BOOST function.

Meticulously designed to deliver real LIONHEART tone in an analogue, pedal amp format. The LIONHEART LOUDPEDAL is a two channel, 60-watt amplifier featuring powerful EQ switching, stunning reverb and - for the first time ever on a LIONHEART - a BOOST. Working with Tom, who continuously tested the design allowed us deliver incredibly articulate, rich LIONHEART tones in a pedalboard-ready form, no bigger than a double pedal!

The LIONHEART-LOUDPEDAL is an entire rig solution in a portable pedal. Clever design means it can be used in different workflows. You can place the LIONHEART-LOUDPEDAL in front of your existing amplifier and use it as a high-quality twin channel clean boost to full-on distortion pedal or plug directly into a passive cabinet on stage or in a rehearsal room.

For silent stage and recording applications the LIONHEART-LOUDPEDAL is equipped with the amazing LA·IR - Laney Advance Impulse Response technology, using 56bit FIR filters to provide high quality cabinet emulations, allowing you to select from 2 onboard IR's, EQ them to your requirements and plug directly into the PA or IEM rig without losing any of the nuance and character of a great mic'd cabinet. You can even load your own favourite IRs into the LIONHEART-LOUDPEDAL pedal with the free LA·IR app via the USB-C connection. The USB-C connection also features audio out which means you can connect it directly into your DAW.

The LIONHEART-LOUDPEDAL gives you the ultimate grab-and-go guitar solution with studio-grade tone wherever you go. Just throw it in your gig bag alongside your other pedals and you're set!

The LIONHEART-LOUDPEDAL is a true LIONHEART amp flat on the floor!

FEATURES

- 60W RMS Amplifier into 8 - 16Ω.
- Two Independent Channels with footswitch control designed from the ground up to replicate the tone AND feel of the LIONHEART Tube Series.
- Channel 1 and 2 each with Gain, Volume and switchable Bright, Dark and Natural voicings.
- Built-in footswitchable Pre-Boost with level control.
- 3 Band Passive Tone Stack as well as overall Tone Control.
- Footswitchable Digital Reverb with control.
- Preloaded with two High Quality LA·IR Digital IRs handcrafted by Tom Quayle.
- Emulated balanced XLR Out with IR select and ground lift switches.
- Class Compliant Audio streaming via USB C socket @48kHz (Emulated and unemulated main out twin stream).
- LA·IR App allows loading of your own custom IRs, changing EQ and firmware updates.
- MIDI In and Thru, with full size MIDI connectors.
- 6.3mm Transformer Isolated FX Loop (FX send doubles as an unemulated line-out).
- 3.5mm Stereo Aux In and 3.5mm Stereo Headphones Output (Follows Cabinet Emulation).

INCLUDED IN THE BOX

- BCC-LOUDPEDAL-LTQ.
- Universal 100-240V~ power supply and mains cord.
- USB C to C Cable (1m).
- USB A to C Adaptor.



CONTROLS

TOP VIEW



Thanks to its dual channel setup, the BCC-LOUDPEDAL-LTQ allows you to easily switch between two tones set, via footswitch or MIDI. Each channel has its own Gain, Volume and Tone settings with switchable BOOST AND REVERB, again via footswitch or MIDI.

CHANNEL 1 SETTINGS

- **VOLUME** control for channel 1, once the gain is set, use this to control the overall level of the channel. Will mute the channel at 0.
- **GAIN** control independently increases the preamp gain of channel 1. Adds more distortion to your signal.
- **TONE SWITCH** allows for control over the frequency response of channel 1.
 - **BRIGHT** - extends the high frequencies and slightly dulls the low-end.
 - **DARK** - boosts the low-end frequencies adding some warmth to the tone whilst reducing the power of the high frequencies.
 - **OFF** - Middle setting gives no change

CHANNEL 2 SETTINGS

- **VOLUME** control for channel 2, once the gain is set, use this to control the overall level of the channel. Will mute the channel at 0.
- **GAIN** control independently increases the preamp gain of channel 2. Adds more distortion to your signal.
- **TONE SWITCH** allows for control over the frequency response of channel 2.
 - **BRIGHT** - extends the high frequencies and slightly dulls the low-end.
 - **DARK** - boosts the low-end frequencies adding some warmth to the tone whilst reducing the power of the high frequencies.
 - **OFF** - Middle setting gives no change

BOOST CONTROL

The switchable and variable BOOST control is an additional gain/drive setting to increase the input signal, just like placing a boost pedal in the signal path. This works on both channels simultaneously, with an LED above the control knob to show that it's active.



TONE

The TONE control works in a similar fashion to the Tone control you probably have on your guitar except that it uniquely works at the other end of the amplification chain. It has the ability to not only control the overall top end response but also reduce upper end harmonics on the output stage and preamplifier overdrive sounds. This will give you bright cutting sounds at high settings and smooth rounded sounds at lower settings. (Midway (0) is a good starting point).

REVERB

Our built-in studio quality spring line reverb effect based on our award-winning Secret Path pedal. Turn the knob clockwise to increase the strength of the effect. The adjacent LED illuminates when the Reverb is active. At 0, only the dry signal will be heard.

EQ CONTROLS

The built in passive EQ stack allows you to fine tune your sound. As a starting point, 12'o clock is the neutral setting for these and will provide you with a good starting point for further tweaking.

- **BASS** - Adjusts the strength of the low-end response of your output, for a deeper sound when turned clockwise.
- **MIDDLE** - Adjusts the strength of the mid-range response of your output, that when turned clockwise gives a fuller sound.
- **TREBLE** - Adjusts the strength of the top-end response of your output. Turning clockwise will boost the brighter, higher notes.

FOOTSWITCHES

- **REVERB** - toggle on/off the reverb control. Reverb status is indicated by the LED to the upper right of the reverb control knob.
- **CHANNEL 1/2** - Choose between the two channels using this switch. The active channel is indicated by the LED to the right of Gain1/2 controls.
- **BOOST** - toggle the boost on/off. Boost status is indicated by the LED to the upper right of the boost control knob.



REAR VIEW



POWER

The Power inlet and switch. This switch will turn on and off the pedal. We suggest turning the pedal off when plugging in the power supply. The BCC-LOUDPEDAL-LTQ has an included power supply runs universally at 100-240V~.

Warning: Only connect the provided 24V 2.5A power supply to the DC inlet.

USB

Use the included Type-C USB cable to connect to a computer and access the **LA·IR app** to modify the pedal's EQ, gain and IRs. Also works as an L/R channel audio output for both emulated and unemulated audio.

HEADPHONE OUT

3.5mm jack to connect your headphones for silent practice as the level feed to the LOUDSPEAKER output is muted. Your selected tone will play directly into your headphones. Adjust the level using the channel volumes controls. The cabinet emulation also applies to the headphones out, following whatever the switch is set to.

AUX IN

3.5mm jack to plug in any audio playing device to add a backing mix to your guitar track. This is added after the FX loop.

LA·IR EMULATED DI OUT

A balanced XLR output to your external device such as a PA or audio interface. Set your desired tone on the pedal first then set the parameters on your chosen interface to get the sound you want. Decide on the emulation you want applied with the LA·IR switch, choosing between two IRs captured and produced by Tom Quayle himself.

- **OFF** - No emulation applied to DI out or headphones
- **A** - By default, applies Tom Quayle's *L20T-212 Vintage 30* IR to the DI out. This can be swapped using the LA·IR desktop app. See [USING THE APP](#) for more information.
- **B** - By default, applies Tom Quayle's *LT112 G12H* IR to the DI out. This can be swapped using the LA·IR desktop app. See [USING THE APP](#) for more information.
- **GROUND LINK** - Disconnects the ground from pin 1 of the DI output ONLY. Useful to attempt to reduce ground loop hum when connected.

MIDI

Connect to a MIDI foot controller to allow for remote switching of REVERB, CHANNEL Select and BOOST using the MIDI IN socket on the BCC-LOUDPEDAL-LTQ or switch external devices with the REVERB, CHANNEL and BOOST footswitches using the MIDI THRU/OUT socket.



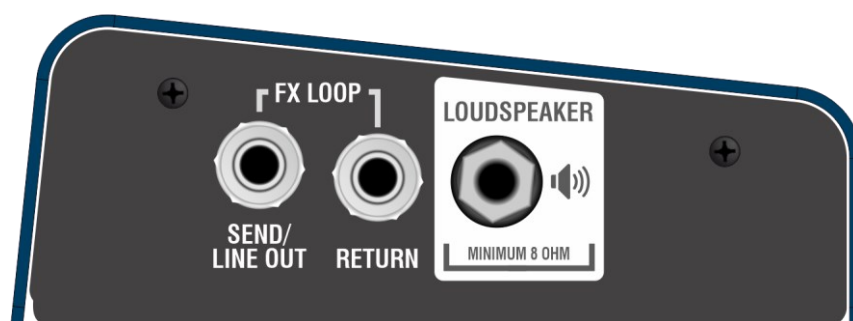
RIGHT SIDE VIEW



INPUT

6.3mm input jack. Plug your signal input in here, either direct from your guitar or from your pedalboard setup.

LEFT SIDE VIEW



FX SEND / LINE OUT (TRANSFORMER ISOLATED)

6.3mm output jack. This is a multi-purpose output that can be used either as a line level output, or as a traditional effect send to your other gear. As this is transformer isolated, it is also possible to use this output directly into the front end of another amplifier, effectively making the BCC-LOUDPEDAL-LTQ a high-quality distortion/boost pedal with no requirement to use the loudspeaker output.

FX RETURN

6.3mm jack to connect the output of your FX loop gear back to the BCC-LOUDPEDAL-LTQ. This is an insert type loop; all the signal is sent through your external gear. Inserting a jack here will break the signal path.

LOUDSPEAKER

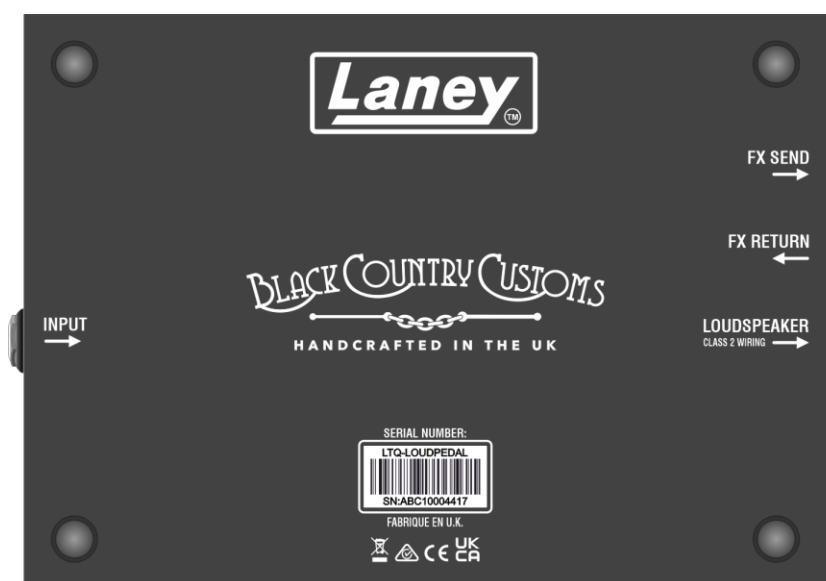
6.3mm jack to output your signal to your speaker cabinet. Use this output when using the BCC-LOUDPEDAL-LTQ as an amplifier directly into a passive 8-16Ω speaker cabinet. Do not connect this output to any other gear such as an effect unit or another amplifier input.

NOTE: Minimum total impedance for the connected speaker cabinet is 8Ω



BOTTOM VIEW

The product serial number is attached here along with other information.



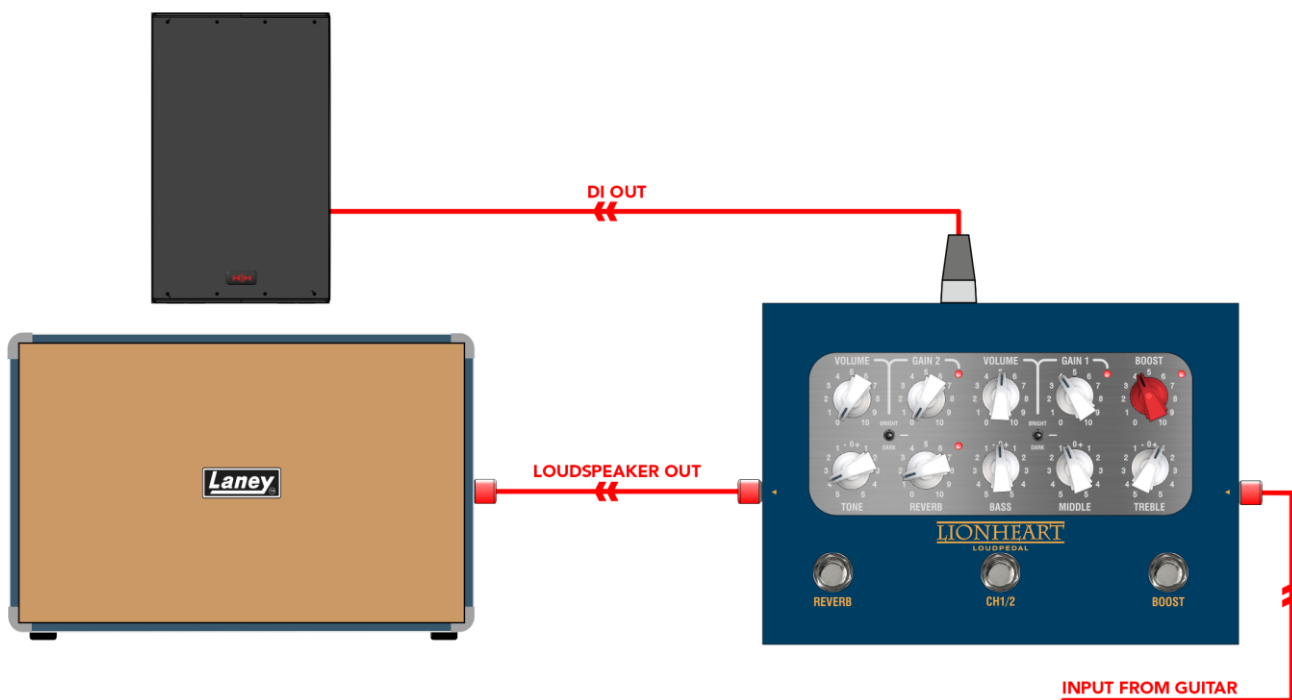
HOW TO CONNECT THE BCC-LOUDPEDAL-LTQ

AS A TRADITIONAL GUITAR AMPLIFIER INTO A CABINET

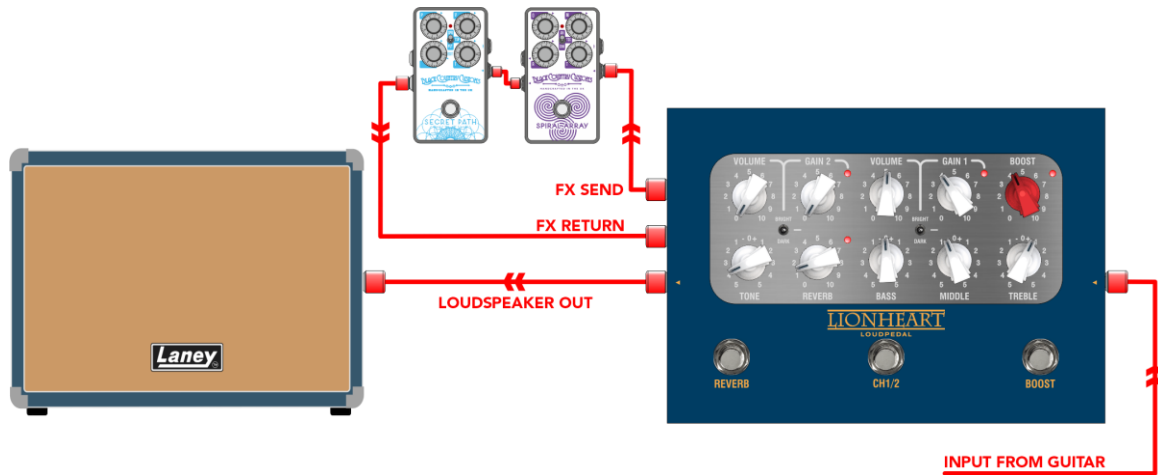


The BCC-LOUDPEDAL-LTQ can function just like your regular head, plugged directly into a passive speaker cabinet. Its loud.

The DI can be used as a balanced feed for additional active cabinets such as our amazing LFR range.

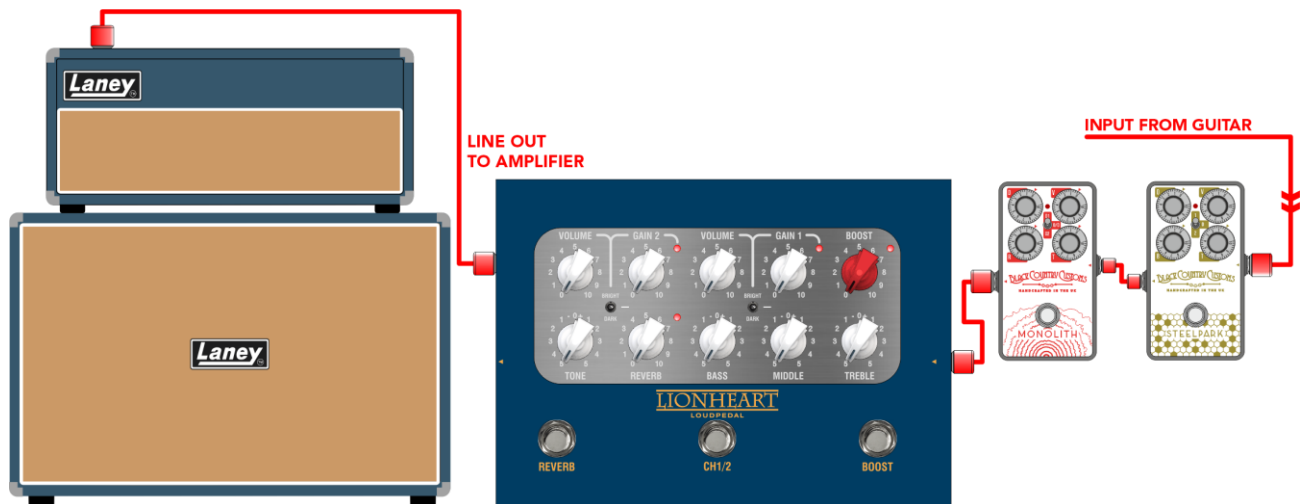


AS AN AMPLIFIER WITH FX LOOP



You can also connect your pedalboard to the BCCLOUDPEDAL-LTQ's FX loop and use the pedal in place of a regular amplifier. Output this to a minimum 8Ω passive speaker cabinet and you have your very own lightweight, portable amplifier.

AS A PEDAL IN FRONT OF AN AMPLIFIER



The BCC-LOUDPEDAL-LTQ can be connected in series with your regular pedal setup to act as a dual channel gain pedal with additional boost. Connect the FX send socket to your amp head.



AS A SILENT PRACTICE RIG USING HEADPHONES OUTPUT

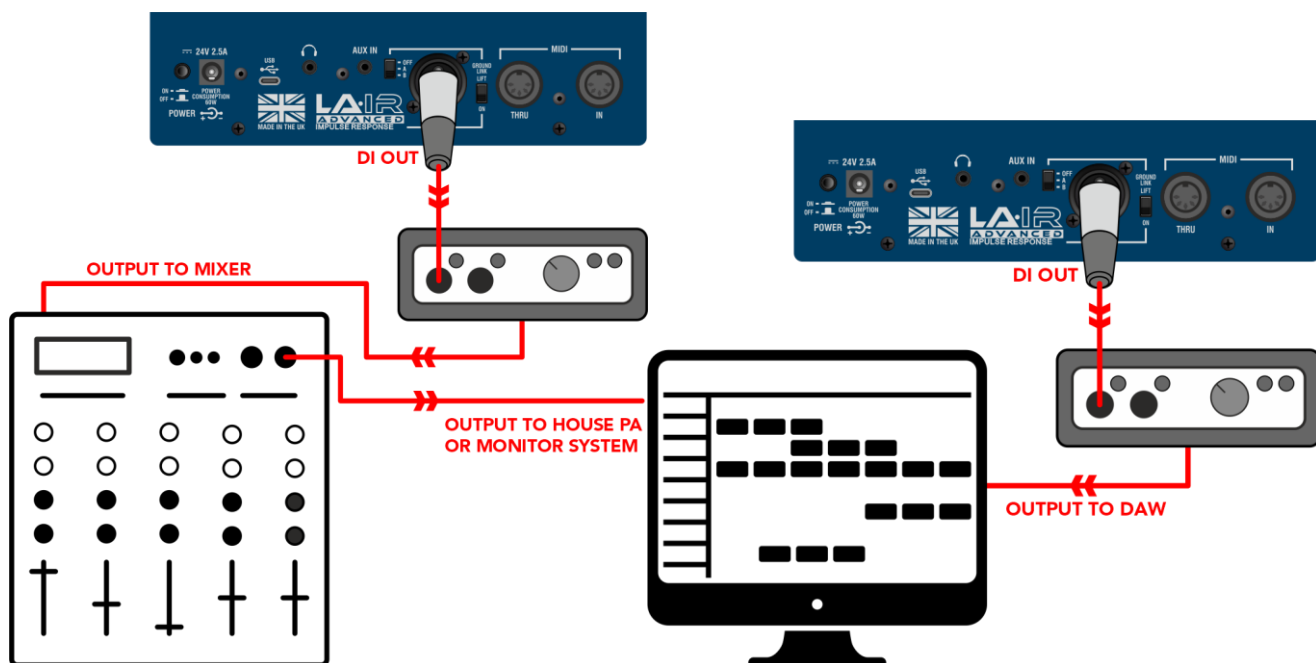
The BCC-LOUDPEDAL-LTQ includes a high-quality headphone output for silent practice. It is optimised for high impedance headphones such as common 33Ω, though any may be used.

To play along with a backing track, the BCC-LOUDPEDAL-LTQ comes with an AUX in connection. This is a stereo 3.5mm mini jack to connect to the audio output of any device with an aux or headphone output.



DIRECTLY INTO A PA OR RECORDING DEVICE WITH XLR DI OUTPUT

The BCC-LOUDPEDAL-LTQ has a high-quality speaker emulated DI output that can be connected to any balanced/unbalanced line level input device such as a PA or audio interface to DAW.



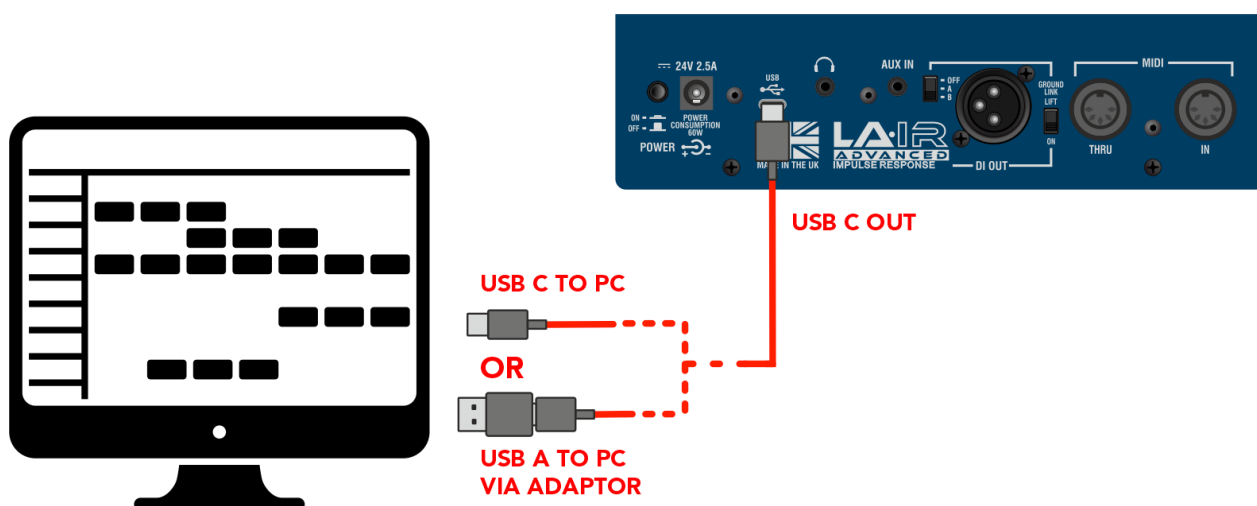
DIRECTLY INTO YOUR COMPUTER VIA USB

The BCC-LOUDPEDAL-LTQ has a high-quality USB audio feed that can be plugged directly into a computer with the provided USB-C cable (USB-A adaptor also included).

Once the pedal has been powered on and is connected, your PC will then pop-up that the pedal is connected and will notify you when the device is ready.

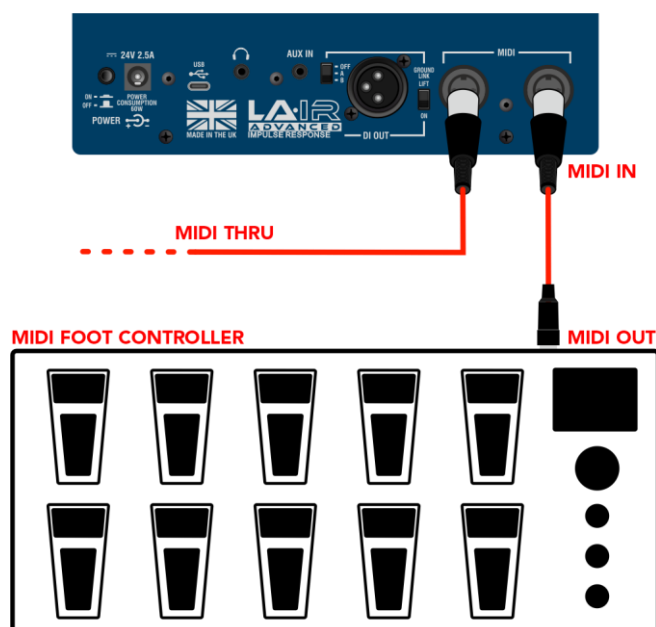
You can now freely use the pedal with the LA·IR app once it has been installed. Simply launch the app with the pedal connected and it's ready to go. See [THE LA·IR APP](#) section for more information.

In addition, there is dual channel USB audio. The left channel will provide you with the emulated audio, following whatever the LA·IR emulation switch is set to. The right channel will provide you with the unemulated audio, bypassing the inbuilt cabinet emulation.



MIDI

Connect to a MIDI foot controller to allow for remote switching of REVERB, CHANNEL Select and BOOST using the MIDI IN socket on the BCC-LOUDPEDAL-LTQ or switch external devices with the REVERB, CHANNEL and BOOST footswitches using the MIDI THRU/OUT socket. The BCC-LOUDPEDAL-LTQ receives MIDI messages on CH8. Please make sure your external MIDI foot controller is configured to send MIDI messages on CH8.



MIDI MESSAGE TABLE

CC	FUNCTION	VALUE
1	Channel switch	0 = ch0 1 = ch1
2	Boost toggle	0 = Boost Off 1 = Boost On
3	Reverb toggle	0 = Reverb Off 1 = Reverb On



THE LA·IR APP

Through the purchase of your BCC LOUDPEDAL-LTQ, you also have access to Laney's very own LA·IR app. The app allows you to expand the sound of your LOUDPEDAL-LTQ even further by switching out the loaded IRs with your own as well as offering an 8-band parametric EQ for each cab.

All this can be done on the fly during practise, so you can hear the change in your sound as you go.

The app runs on **Windows 10/11** and **Mac OS**.

DOWNLOAD & INSTALLATION

To receive your software, first register your product via the [Laney warranty page](#). On submission of your registration, you will be provided with a download link for the installer – MAC or WINDOWS.

A link to download the software will also be forwarded to your email.

WINDOWS

Once downloaded, run the *Setup-LAIR_x64.exe* found in the downloads folder in file explorer. Follow the installers instructions, accepting the EULA and choosing a suitable location for the install, then press Install to complete.

MAC

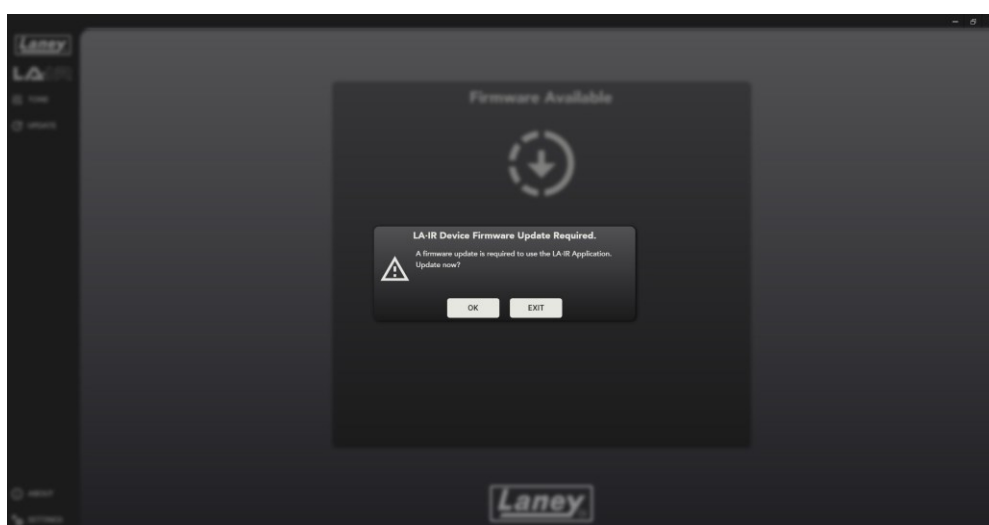
Once the *.dmg* file has been downloaded, drag this into the applications folder to complete the install. Launch the LA·IR app from this folder location from now on.

LA·IR UPDATE

The app will automatically prompt you for an update upon startup should a new version be released. We recommend accepting any updates as they may include new features or bug fixes.

FIRMWARE UPDATE

Similarly, with your BCC-LOUDPEDAL-LTQ connected and powered on, you will be notified if any firmware updates are available for the pedal. Again, we recommend allowing any updates that come through so as to improve your user experience.



Minor updates may not show as a pop-up so be sure to check the update panel from time to time, where these can be accessed.



USING THE APP

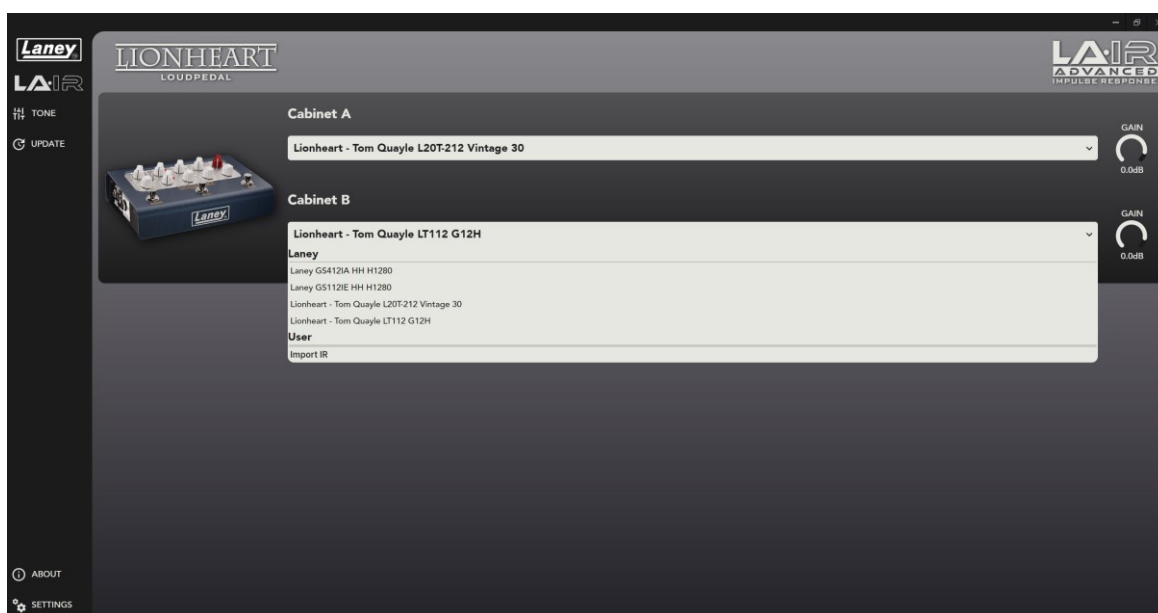
CONNECTING THE LOUDPEDAL-LTQ

Connecting the BCC-LOUDPEDAL-LTQ is easily done via the USB-C cable provided with the pedal in the box. Plug one end into the USB-C socket on the pedal and the other into your computer that has the app downloaded.

Can be plugged into a computer with either USB-C or A sockets – simply use the USB A to C adaptor provided.

CHANGING THE IRs

Aside from the two preloaded IRs on the pedal, the app can be used to swap these out for any of your own IRs. To load your own User IR, click the drop-down box under either cab A/B and select "Import IR" – only .wav files can be used. The app will convert your IR into the .Lair file format that the pedal can use. Do not worry, your original .wav file will not be deleted! Two of Laney's own 1x12 cab and 4x12 cab IRs are also included with the app.



It is possible to edit the name of User IRs as well as delete them from the pedal and the app. To do so, right click on any IRs under the "User" section and press "EDIT" or "DELETE". The default System IRs cannot be deleted.

WARNING: Deleting a User IR is permanent and cannot be reversed. The only way to get the IR back is to re-import the original .wav file

CHANGING THE GAIN

The gain of each cab IR can also be changed individually via the radial control on the right-hand side, should they be too loud/quiet. This gain will be saved to the IR's .Lair file so will remain when using the pedal without the app.

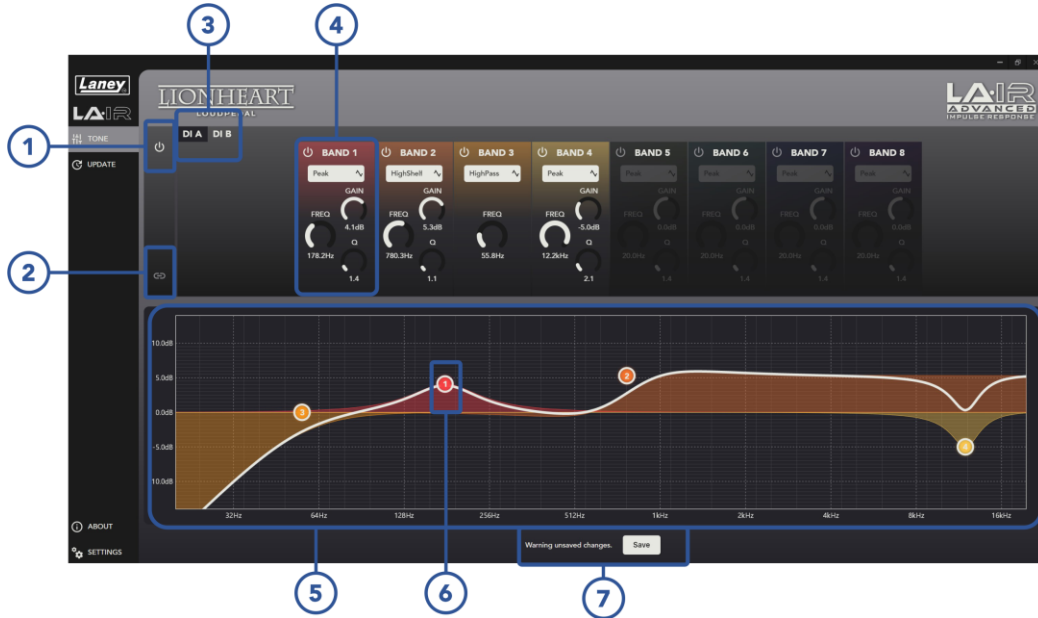
Simply drag the slider, or alternatively use your mouse scroll wheel or double click and manually type the gain you want (in dB). Ranges from -40dB to +6dB.



CHANGING THE EQ

The LA·IR app also comes with an 8-band parametric EQ for each cab. 5 different filters are available, paired with easy-to-use controls allowing you to change the gain, frequency and Q factor depending on the filter applied.

WARNING: Any EQ changes will be permanently lost if the app is closed/disconnected without saving!



1. EQ TOGGLE

Turn on and off the EQ for the whole pedal (Cab A and B), can be useful for dry/wet testing.

2. A+B LINK

Link the Cab A and Cab B EQs to be the same. This will follow the EQ for Cab A when pressed. Unlinking will revert Cab B to its previous state.

3. DI CAB SELECT

Choose which cab you want to edit the EQ for. Selected cab is highlighted in black.

4. BAND CONTROLS

The main controls for each band are found here. Turn the band on and off and change filter you want the band to apply from the drop-down menu. Choose from peaking, high/low pass, and high/low shelf.

Additionally, 3 radial sliders are available to change the gain, centre frequency and Q factor of the filter. The value of each slider can be changed by dragging, using your mouse scroll wheel, or double clicking the number and manually typing in your desired value. Depending on the filter selected, 1 or multiple of these controls will be available.

5. FREQUENCY RESPONSE GRAPH

This graph displays the resultant frequency response of all the EQ bands. View your changes live to easily see how your sound will be affected. Additionally, each band is colour coded so you can see which filter is doing what.

6. BAND NODE

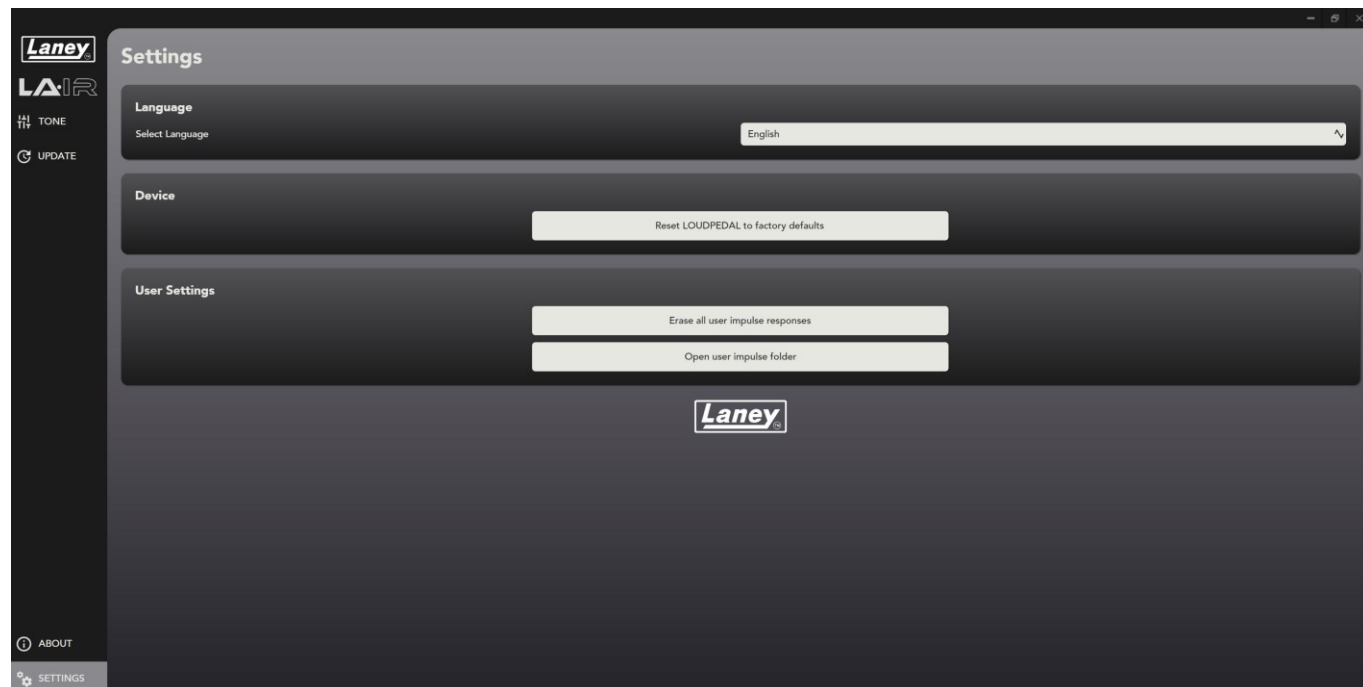
The graph also shows a numbered node representing each band currently active. Showing the current centre frequency and gain, these are draggable to allow for quick and easy changes. For more precise changes we recommend using the band controls (4).



7. SAVE BUTTON

Press this to save any unsaved changes to the EQs (both A and B), so they can be stored on the pedal and used without the app. Should any unsaved changes be present, this will be visible to alert you that closing the app (or disconnecting the pedal) will lose these changes.

SETTINGS PANEL



LANGUAGE

Change the language of the LA-IR app to your preferred language.

RESET DEVICE

This will reset all EQ and gain changes as well as return the IRs back to the default Tom Quayle ones. This cannot be undone and all changes from the default will be lost.

ERASING THE USER IRS

Delete **all** user IRs from the app and pedal. These are impossible to get back unless you have the original .wav file to import again so be sure you want to do this. A pop-up warning will show before deleting.

OPEN USER IR FOLDER

Open the folder where all your imported IRs are stored.



EXAMPLE SETTINGS

The best way to get started with your BCC-LOUDPEDAL-LTQ is to experiment with the controls to find your favourite sounds. However, for a head start, here are a few example tone settings to try out:

TOM QUAYLE'S TONE

Here is Tom Quayle's preferred settings when using the LOUDPEDAL-LTQ. Includes settings for both channels.



CLEAN



RHYTHM



LEAD



SATURATED

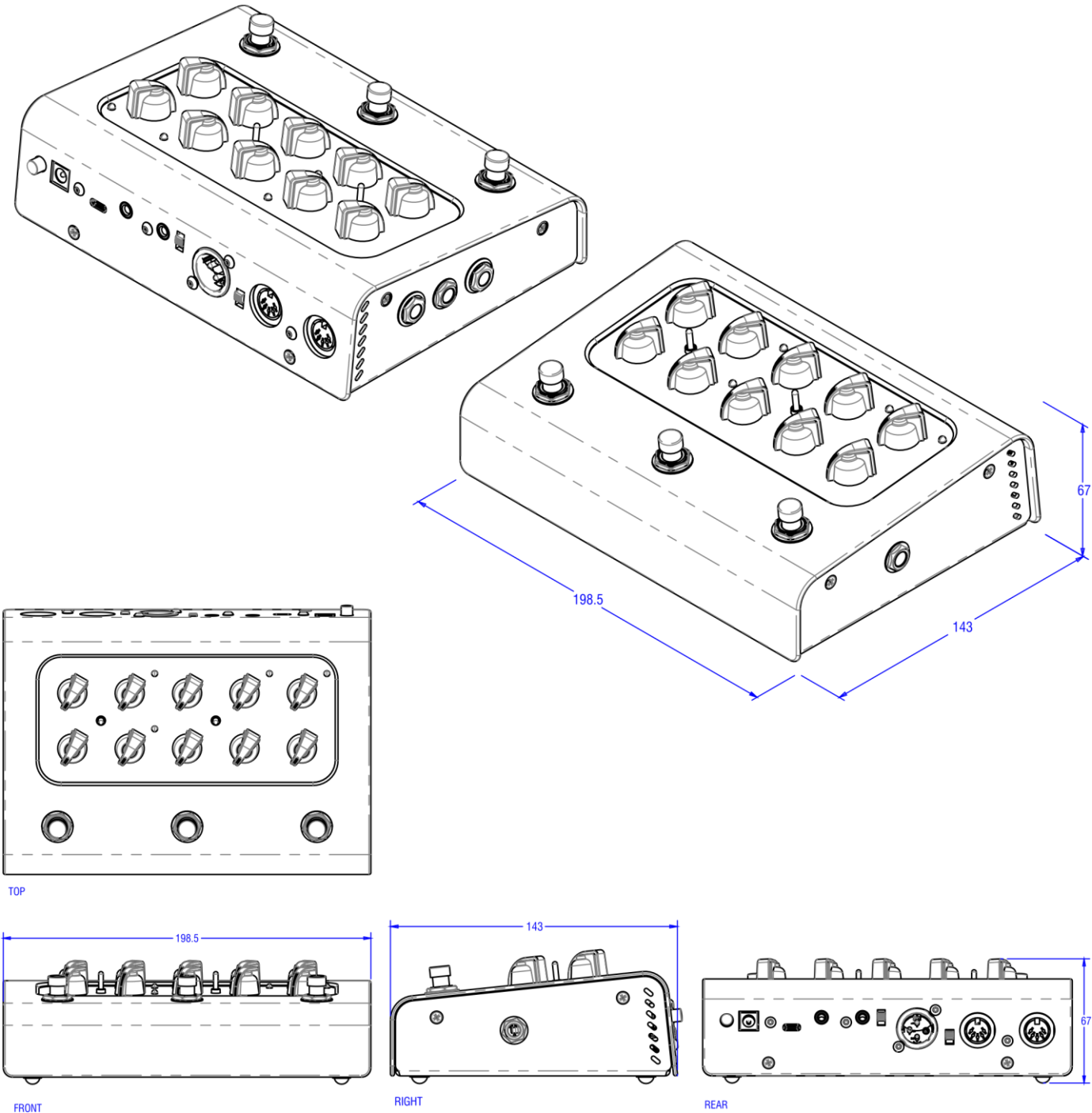


SPECIFICATIONS

Model No	BCCLOUDPEDAL-LTQ
Name	Laney LIONHEART Series LOUDPEDAL - Tom Quayle Collaboration
Type	Pedal Board Guitar Amplifier
Input Impedance	1MΩ
Amplifier Power	60W RMS
Channels	Clean and Drive (Footswitchable)
EQ	Bass, Middle Treble (Passive tone stack) Overall Tone Control, plus Bright switch (Clean Channel) and Tone character Switch (Drive Channel)
Effects	Digital Springline Reverb (Footwitchable), External FX Loop
Controls	Pre-Boost, Clean Volume, Clean Bright Switch, Channel Switch, Drive Gain, Drive Volume, Drive Tone Character (Normal, Bright, Dark), Bass, Middle, Treble, Reverb
Indicators	LEDs for Boost, Channel 1, Channel 2, and Reverb
Inputs	6.3mm (1/4") Mono Instrument Input Jack, 6.3mm FX Return jack, 3.5mm stereo aux in jack
Outputs	6.3mm Transformer Isolated FX Send (Doubles as Line Out), 3.5mm stereo headphone jack, Balanced Male XLR DI out with LA-IR Speaker Emulated Digital Impulse Response with high quality 1x12 and 4x12 options.
Other	USB C for Class compliant audio streaming @48kHz (Emulated and unemulated main out) and loading of custom IR's
Power Supply	Regulated 24V 2.5A 60W DC PSU Included: Centre Positive, 2.1 x 5.5 x 12mm connector type
Typical Power Consumption	60W
Unit dimensions (HWD)	67 x 199 x 143mm, (2.6" x 7.8" x 5.6")
Unit weight	1.7Kg, (3.7 lbs)
Carton dimensions (HWD)	125 x 220 x 165mm, (4.9" x 8.7" x 6.5") , 0.005 M3
Packed Weight	2.16Kg, (4.8 lbs)
EAN Code (Single)	5060109458909
Master Carton Dimensions (HWD)	280 x 570 x 210mm, (11" x 22.4" x 8.3") , 0.034 M3 (4 pcs)
Master Shipping Carton Weight	2.16Kg, (4.8 lbs) (4 pcs)
EAN Code (Shipping)	5060109458923 (4 pcs)



DIMENSIONS (in mm)









SAFETY AND WARNINGS

In order to take full advantage of your new product and enjoy long and trouble-free performance, please read this owner's manual carefully, and keep it in a safe place for future reference.

- 1) Unpacking: On unpacking your product please check carefully for any signs of damage that may have occurred whilst in transit from the Laney factory to your dealer. In the unlikely event that there has been damage, please re-pack your unit in its original carton and consult your dealer. We strongly advise you to keep your original transit carton, since in the unlikely event that your unit should develop a fault, you will be able to return it to you dealer for rectification securely packed.
- 2) Amplifier Connection: In order to avoid damage, Generally it is advisable to establish and follow a pattern for turning on and off your system. With all system parts connected, turn on source equipment, mixers, effects processors etc, BEFORE turning on your amplifier. Many products have large transient surges at turn on and off which can cause damage to your speakers. By turning on your amplifier LAST and making sure its level control is set to a minimum, any transients from other equipment should not reach your loud speakers. Wait till all system parts have stabilised, usually a couple of seconds. Similarly when turning off your system always turn down the level controls on your amplifier and then turn off its power before turning off other equipment.
- 3) Cables: Never use shielded or microphone cable for any speaker connections as this will not be substantial enough to handle the amplifier load and could cause damage to your complete system. Use good quality shielded cables everywhere else.
- 4) Servicing: The user should not attempt to service these products. Refer all servicing to qualified service personnel.
- 5) Heed all warnings.
- 6) Follow all instructions.
- 7) Do not use this apparatus near water.
- 8) Clean only with a dry cloth.
- 9) Do not block any of the ventilation openings. Install in accordance with manufacturer's instructions.
- 10) Do not install near any heat sources such as radiators, heat registers, stoves or other apparatus (including amplifiers) that produce heat.
- 11) An apparatus with Class I construction shall be connected to a mains socket outlet with a protective connection. Do not defeat the safety purpose of the polarized or grounding-type plug. A polarized plug has two blades with one wider than the other. A grounding type plug has two blades and a third grounding prong. The wide blade or third prong is provided for your safety. If the provided plug does not fit into your outlet, consult an electrician for replacement of the obsolete outlet.
- 12) Protect the power cord from being walked on or pinched, particularly at plugs, convenience receptacles, and the point they exit from the apparatus.
- 13) Only use attachments/accessories provided by the manufacturer.
- 14) Use only with a cart, stand, tripod, bracket, or table specified by the manufacturer, or sold with the apparatus. When a cart is used, use caution when moving the cart/apparatus combination to avoid injury from tip-over.
- 15) The mains plug or appliance coupler is used as the disconnect device and shall remain readily operable. The user should allow easy access to any mains plug, mains coupler and mains switch used in conjunction with this unit thus making it readily operable. Unplug this apparatus during lightning storms or when unused for long periods of time.
- 16) Refer all servicing to qualified service personnel. Servicing is required when the apparatus has been damaged in any way, such as when power-supply cord or plug is damaged, liquid has been spilled or objects have fallen into the apparatus, the apparatus has been exposed to rain or moisture, does not operate normally, or has been dropped.
- 17) Never break off the ground pin. Connect only to a power supply of the type marked on the unit adjacent to the power supply cord.
- 18) If this product is to be mounted in an equipment rack, rear support should be provided.
- 19) Note for UK only: If the colours of the wires in the mains lead of this unit do not correspond with the terminals in your plug, proceed as follows:
 - o The wire that is coloured green and yellow must be connected to the terminal that is marked by the letter E, the earth symbol, coloured green or coloured green and yellow.
 - o The wire that is coloured blue must be connected to the terminal that is marked with the letter N or the colour black.
 - o The wire that is coloured brown must be connected to the terminal that is marked with the letter L or the colour red.
- 20) This electrical apparatus should not be exposed to dripping or splashing and care should be taken not to place objects containing liquids, such as vases, upon the apparatus.
- 21) Exposure to extremely high noise levels may cause a permanent hearing loss. Individuals vary considerably in susceptibility to noise-induced hearing loss, but nearly everyone will lose some hearing if exposed to sufficiently intense noise for a sufficient time. The U.S. Government's Occupational Safety and Health Administration (OSHA) has specified the following permissible noise level exposures: According to OSHA, any exposure in excess of the above permissible limits could result in some hearing loss. Earplugs or protectors to the ear canals or over the ears must be worn when operating this amplification system in order to prevent a permanent hearing loss, if exposure is in excess of the limits as set forth above. To ensure against potentially dangerous exposure to high sound pressure levels, it is recommended that all persons exposed to equipment capable of producing high sound pressure levels such as this amplification system be protected by hearing protectors while this unit is in operation.
- 22) If your appliance features a tilting mechanism or a kickback style cabinet, please use this design feature with caution. Due to the ease with which the amplifier can be moved between straight and tilted back positions, only use the amplifier on a level, stable surface. DO NOT operate the amplifier on a desk, table, shelf or otherwise unsuitable non-stable platform.
- 23) Symbols & nomenclature used on the product and in the product manuals, intended to alert the operator to areas where extra caution may be necessary, are as follows:

Duration Per Day in Hours	Sound Level dBA, slow response
8	90
6	92
4	95
3	97
2	100
1 1/2	102
1	105
1/2	110
1/4 ou inférieur	115



 CAUTION:	<p>Intended to alert the user to the presence of uninsulated 'Dangerous Voltage' within the products enclosure that may be sufficient to constitute a risk of electrical shock to persons.</p> <p>Ce symbole est utilise pur indiquer a l'utilisateur de ce produit de tension non-isolee dangereuse pouvant etre d'intensite suffisante pour constituer un risque de choc electrique.</p> <p>Este simbolo tiene el proposito de alertar al usuario de la presencia de '(voltaje) peligroso' que no tiene aislamiento dentro de la caja del producto que puede tener una magnitud suficiente como para constituir riesgo de corrientazo.</p> <p>Dieses Symbol soll den Anwender vor unsolierten gefahrlichen Spannungen innerhalb des Gehauses warnen, die von Ausreichender Starke sind, um einen elektrischen Schlag verursachen zu konnen.</p>
 WARNING:	<p>Intended to alert the user of the presence of important operating and maintenance (Servicing) instructions in the literature accompanying the product.</p> <p>Dieses Symbol soll den Anwender vor unsolierten gefahrlichen Spannungen innerhalb des Gehauses warnen, die von Ausreichender Starke sind, um einen elektrischen Schlag verursachen zu konnen.</p> <p>Este simbolo tiene el proposito de la alertar al usuario de la presencis de instrucccones importantes sobre la operacion y mantenimiento en la literatura que viene conel producto.</p> <p>Dieses Symbol soll den Benutzer auf wichtige Instruktionen in der Bedienungsanleitung aufmerksam machen, die Handhabung und Wartung des Produkts betreffen.</p>
<p>CAUTION:</p> <p>ATTENTION:</p> <p>PRECAUCION:</p> <p>VORSICHT:</p>	<p>Risk of electrical shock - DO NOT OPEN. To reduce the risk of electrical shock, do not remove the cover. No user serviceable parts inside. Refer servicing to qualified personnel.</p> <p>Risques de choc electrique - NE PAS OUVIRIR. Afin de reduire le risque de choc electrique, ne pas enlever le couvercle. Il ne se trouve a l'interieur aucune piece pouvant etre reparee par l'utilisateur. Confier l'entretien a un personnel qualifie.</p> <p>Riesgo de corrientazo - no abra. Para disminuir el riesgo de carrientazo, no abra la cubierta. No hay piezas adentro que el pueda reparar. Deje todo mantenimiento a los tecnicos calificados.</p> <p>Risiko - Elektrischer Schlag! Nicht offen! Um das Risiko eines elektrischen Schlages zu vermeiden, nicht die Abdeckung entfernen. Es befinden sich keine Teile darin, die vow Anwender repariert werden Konnten. Reparaturen nur von qualifiziertem Fachpersonal durchfuhren lassen.</p>
<p>WARNING:</p> <p>ADVERTISSEMENT:</p> <p>ADVERTENCIA:</p> <p>ACHTUNG:</p>	<p>To prevent electrical shock or fire hazard, do not expose this appliance to rain or moisture. Before using this appliance please read the operating instructions for further warnings.</p> <p>Afin de prevenir les risques de decharge electrique ou de feu, n'exposez pas cet appareil a la pluie ou a l'humidite. Avant d'utiliser cet appareil, lisez les advertissements supplentaires situes dans le guide.</p> <p>Para evitar corrientazos o peligro de incendio, no deja expuesto a la lluvia o humedad este aparato Antes de usar este aparato, lea mas advertcias en la guia de operacion.</p> <p>Um einen elektrischen Schalg oder Feuergefahr zu vermeiden, sollte dieses Gerat nicht dem Regen oder Feuchtigkeit ausgesetzt werden. Vor Inbetriebnahme unbedingt die Bedienungsanleitung lesen.</p>
	<p>This device complies with Part 15 of the FCC rules Operation is subject to the following two conditions:</p> <ol style="list-style-type: none"> 1) This device may not cause harmful interference 2) This device must accept any interference received, that may cause undesired operation. <p>Warning: Changes or modification to the equipment not approved by Laney can void the user's authority to use the equipment.</p> <p>Note: This equipment has been tested and found to comply with the limits for Class B digital device, pursuant to Part 15 of the FCC Rules. These limits are designed to provide reasonable protection against harmful interference in a residential installation. This equipment generates, uses and can radiate radio frequency energy and if not installed and used in accordance with the instructions, may cause harmful interference to radio communications. However, there is no guarantee that interference will not occur in a particular installation. If this equipment does cause harmful interference to radio or television reception, which can be determined by turning the equipment off and on, the user is encouraged to try and correct the interference by one or more of the following measures. Reorient or relocate the receiving antenna. Increase the separation between the equipment and receiver. Connect the equipment into an outlet on a circuit different from that to which the receiver is connected. Consult the dealer or an experienced radio/TV technician for help.</p>
	<p>This product conforms to the requirements of the following European Regulations, Directives & Rules: CE Mark (93/68/EEC), Low Voltage (2014/35/EU), EMC (2014/30/EU), RoHS (2011/65/EU), ErP (2009/125/EU)</p> <p>SIMPLIFIED EU DECLARATION OF CONFORMITY</p> <p>Hereby, Laney Electronics Ltd. declares that the radio equipment is in compliance with Directives 2014/53/EU, 2011/65/EU, 2009/125/EU. Full text of the EU declaration of conformity is available at the following internet address:</p> <p>http://support.laney.co.uk/approvals</p>
	<p>The object of the declaration described above is in conformity with the relevant statutory requirement Electrical Equipment (Safety) Regulations 2016, Electromagnetic Compatibility Regulations 2016, The Restriction of the use of Certain Hazardous Substances in Electrical and Electronic Equipment Regulations 2012, The Ecodesign for Energy-Related Products and Energy Information, (Amendment) (EU Exit) Regulations 2012</p>
	<p>In order to reduce environmental damage, at the end of its useful life, this product must not be disposed of along with normal household waste to landfill sites. It must be taken to an approved recycling centre according to the recommendations of the WEEE (Waste Electrical and Electronic Equipment) directive applicable in your country.</p>



BLACK COUNTRY CUSTOMS

HANDCRAFTED IN THE UK



STEELPARK ROAD, COOMBSWOOD BUSINESS PARK WEST, HALESOWEN, B62 8HD. UK
FOR THE LATEST INFORMATION PLEASE VISIT WWW.LANEY.CO.UK

IN THE INTEREST OF CONTINUED DEVELOPMENT, LANEY RESERVES THE RIGHT TO AMEND PRODUCT SPECIFICATION WITHOUT PRIOR NOTIFICATION.